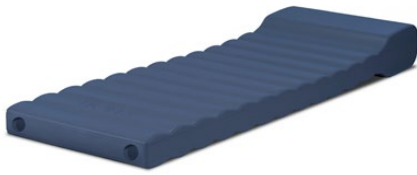


Comfort Shield® Custody Mattress

Marathon



Model MM4-2575

Weight 75 lbs / 34 kg

Dimensions	in	cm
Width	25"	63.5
Length	75.1"	190.8
Body Height	4.5"	11.4
Pillow Height	8"	20.3

Finishes

See Design Guide for finish options.

Assembly

Shipped assembled in poly bag.

**Intended for indoor use only*

Fabrication & Material

Seamless Mattress with Integrated Double-Sided Pillow

One-piece rotationally molded, 200 mil flexible vinyl exterior skin filled with soft 2 part water-based polyurethane foam. Unique seamless, stitchless, and stringless design is nonabsorbent and fluid resistant for enhanced hygiene, security and longevity. Smooth, exterior surface is easy to clean and sanitize. Chemically resistant to blood, vinegar, urine, feces, salt solution and chlorine solution. Made in the U.S.A.

Warranty

10 year limited prorated warranty.

Maintenance

For routine and regular cleaning maintenance, Norix recommends the use of Simple Green® or an equivalent cleaning product. For the deep-scrub cleaning of tougher stains, marks and debris, we recommend the use of Clorox® Clean-Up® Cleaner + Bleach or an equivalent cleaning solution.

Environmental Test Standards

- GREENGUARD and GREENGUARD Gold Certified by UL Environment. Product certified for low chemical emissions to UL 2818. UL.COM/GG.

Flammability Test Standards

- 16 CFR Part 1633
- 16 CFR Part 1632

