

# DESIGN GUIDE

MARCH 2022

ENGINEERED TO ENDURE®

**NORIX**

# Color and The

Color is a vital design tool in providing a therapeutic environment that helps reduce tension, assist in behavior modification and enhance resident and staff safety.

Research indicates that interiors with the interesting use of color that are not overly neutral can:

- Balance the mental equilibrium of residents
- Reduce behavioral discord
- Promote dignity and encourage socialization
- In general, improve resident and staff morale

When applied with understanding and purpose, color can:

- Promote the resident's self confidence
- Serve as a positive distraction
- Uplift the spirit and soothe the psyche
- Provide a visual interest and positive distraction

A normalized environment can assist residents to:

- Reduce tensions and anxiety
- Promote positive behavior modification
- Connect to the natural world and even the region where they reside
- Feel destigmatized within their current settings

With focus on environments with behavioral discord, the Naturals Color Collection addresses three primary human elements:

- Familiarity (Connection to outside world)
- Stress reduction (Calming and lifting the spirit)
- Morale improvement (Humanizing and normalizing)

The Naturals Collections can be used to provide coordinated colors to:

- Common areas
- Sleep spaces
- Learning spaces
- Dining areas

## The Naturals Color Collection



The Naturals Color Collection was created specifically for Norix by Tara Hill of Little Fish Think Tank, a design consultant recognized for her work in the use of color to create normalized environments that support positive outcomes.

Ms. Hill also has significant experience regarding the science and theory of color as both a design tool and as a promoter of healing. She has conducted extensive research in evidence-based design regarding color and its profound emotional and physical impact on the human spirit.



# Human Spirit



*"Color is intrinsic in our everyday lives. We perceive color's presence in our environment, and respond positively. Color is a very cost effective design tool to dramatically improve the environment at nominal cost." - Tara Hill*

# Norix Color Collection

*At Norix, we design innovative, robust furniture that meets the real-world need for humanizing challenging environments.*



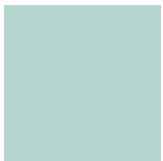
## Lagoon

Soothing, tranquil and contemplative. The color of sapphire, blue birds and fresh water. Lagoon is easily used in high quantities, but will never compete with other materials and color.



## Pine Cone

Rich, familiar and grounding. The color of terra firma, soil and the earth. Pine cone behaves as a foundational neutral, easily partnered with other color options.



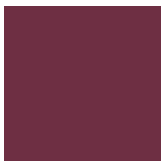
## Sea Spray

Breezy and refreshing. Sea Spray takes us to the Caribbean, far away island waters, summer pool parties and sun-kissed dew drops. With just a hint of mint, it's cooling and calming. A perfect partner for all palettes.



## River Rock

Alleviating, timeless and quiet. The color of stone, rock and alloy. River Rock allows other colors and materials to be showcased to their fullest.



## Wild Berry

Velvety, lush and assured. Wild Berry is the color of farm-to-table ripened berries, produce and fermented grapes. It's a time-honored color designating prosperity and abundance. Behaving as a hue or a neutral, soft spoken but unyielding. This color partners with all others to provide added interest.



## Graphite

Proud, approachable and expansive. Graphite is a confident neutral. The color of pewter, metamorphic rock, and treasured land and sea fauna. Graphite is a staple with an earnest voice.



# Kids Furniture Palette



Norix Furniture's line of fun and durable kids furniture is available in a vibrant and engaging color palette made up of four bright hues that are certain to resonate with children and inspire their imagination.

Malibu

Cobalt

Habanero

Grey Velvet

# Norix Product Series

Products that include this icon  are available with upholstery and fabric options.

*\*For complete details see [norix.com](http://norix.com). Options and pricing may vary depending on your configuration.*



## Vesta™ Series



Seat Colors



Lagoon



Sea Spray



Wild Berry



River Rock



Pine Cone



Graphite



## Forté® Series



Seat Colors



Lagoon



Sea Spray



Wild Berry



River Rock



Pine Cone



Graphite

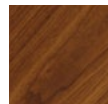
Wood Base



Maple



Teak



Walnut

Steel Base



Metallic Silver

Molded Plinth Base



Graphite



Raven



## Hondo Nuevo® Series

Seat Colors



Lagoon



Wild Berry



Pine Cone



Graphite



Raven

Molded Plinth Base



Graphite



Raven

Steel Base

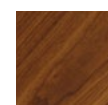


Metallic Silver

Molded Wood Grain Legs



Maple



Walnut



## Element Series



Arm Cap / Leg Colors



Raven



## Harmony® Series



Arm Cap / Leg Colors



Raven



## Forma Series

### Laminate Cube Tops



Kensington  
Maple



Wild Cherry



Asian Sun



Montana  
Walnut

### Molded Plinth Base



Graphite



Raven

### Steel Base



Metallic  
Silver

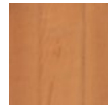


## Terra Series

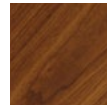
### Wood Arm Caps



Maple



Teak



Walnut

### Arm Caps



Raven

### Frames



Black



Metallic Silver

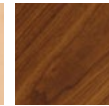


## Affinity Series

### Wood Backs



Maple



Walnut (Stain)

### Arm Caps



Black

### Frames



Metallic Silver



## Wink™ Series

### Seat Colors



Lagoon



Sea Spray



Wild Berry



River Rock



Pine Cone



Graphite

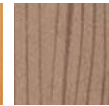


## Toro Series

### Seat Colors



Harvest



Java



## RockSmart®

### Seat Colors



Lagoon



Sea Spray



Wild Berry



River Rock



Pine Cone



Graphite



## Toughcare® Series

### Colors



Lagoon



Sea Spray



Wild Berry



River Rock



Pine Cone



Graphite



## Boulder Beam Seating

Seat Colors



Lagoon



Sea Spray



Wild Berry



River Rock



Pine Cone



Graphite



Raven

Frame



Black



Metallic Silver



## Gibraltar® Beam Seating

Seat Colors



Lagoon



Sea Spray



Wild Berry



River Rock



Pine Cone



Graphite



Raven

Frame



Black

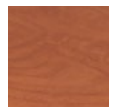


Metallic Silver

## Sled Base Chairs



Oak



Cherry



## Integra Series

Colors



Lagoon



Sea Spray



Wild Berry



River Rock



Pine Cone



Graphite



## Progress Series

Seat Colors



Lagoon



Wild Berry



River Rock



Raven



## Mix-Up™ Series

Molded Base



Graphite



Raven



## Kids Series

Colors



Cobalt



Malibu



Habanero



Grey Velvet



## Goby® Outdoor Series

Colors



Cobalt



Malibu



Graphite



Grey Velvet



## Riptide™ Outdoor Series

Colors



Cobalt



Malibu



Graphite



Grey Velvet





## Kube Series



### Base Colors



Cobalt



Malibu



Graphite



Grey Velvet



## B-Side

### Colors



Lagoon



Sea Spray



Wild Berry



River Rock



Pine Cone



Graphite

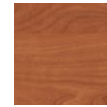


## Tabla Tables

### Laminates



Kensington  
Maple



Wild Cherry



Asian Sun



Montana  
Walnut

### Bases



Raven



## Toro Table

### Colors



Harvest



Java



## Forté® Occasional Tables

### Top Colors



Lagoon



Sea Spray

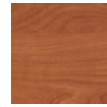


Wild Berry

### Laminates Tops



Kensington  
Maple



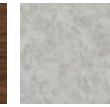
Wild Cherry



Asian Sun



Montana  
Walnut



Titanium  
Evolve



River Rock



Pine Cone

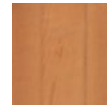


Graphite

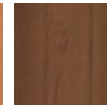
### Wood Base



Maple



Teak



Walnut

### Molded Plinth Base



Graphite



Raven

### Steel Base



Metallic Silver

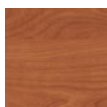


## Harmony® Tables

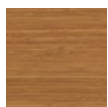
### Laminate Tops



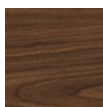
Kensington  
Maple



Wild Cherry



Asian Sun

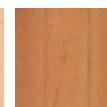


Montana  
Walnut

### Wood Leg Colors



Maple



Teak

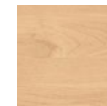


Walnut



## Forté® Café Tables

### Laminate Tops



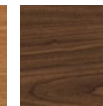
Kensington  
Maple



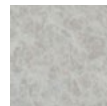
Wild Cherry



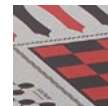
Asian Sun



Montana  
Walnut



Titanium  
Evolve



Titanium Evolve  
Game Top

### Molded Base



Graphite



Raven

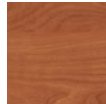


## Multi-Purpose Tables

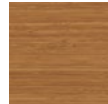
### Laminates



Kensington  
Maple



Wild Cherry



Asian Sun



Montana  
Walnut



Titanium  
Evolve



Titanium Evolve  
Game Top

### Bases



Black



Metallic Silver



## Leg Style Tables

### Laminates



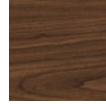
Wild Cherry



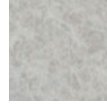
Kensington  
Maple



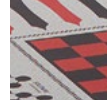
Asian Sun



Montana  
Walnut



Titanium  
Evolve



Titanium Evolve  
Game Top

### Bases



Black



Metallic Silver

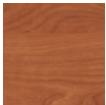


## X-Base Tables

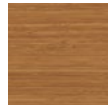
### Laminate Tops



Kensington  
Maple



Wild Cherry



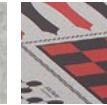
Asian Sun



Montana  
Walnut



Titanium  
Evolve



Titanium  
Evolve  
Game Top

### Laminate Base



Black



## Max-Master Tables

### Seat Colors



Lagoon



Sea Spray



Wild Berry



River Rock



Pine Cone



Graphite



Raven

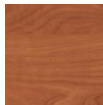


Stainless  
Steel

### Laminate Tops



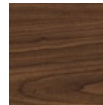
Kensington  
Maple



Wild Cherry



Asian Sun



Montana  
Walnut



Titanium  
Evolve



Titanium  
Evolve  
Game Top

### Stainless Steel Tops



Stainless  
Steel with  
Quietcore

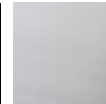


Stainless  
Steel

### Legs



Black



Metallic Silver

\*Available  
on 42" and  
54" round

\*Available on  
30" x 72" and  
30" x 96"

## Jupiter Tables



### Laminate Tops



Kensington  
Maple



Wild Cherry



Asian Sun



Montana  
Walnut



Titanium  
Evolve



Titanium  
Evolve  
Game Top

### Molded Base



Raven

## Oasis® Cafeteria Tables



### Seat Colors



Lagoon



Sea Spray



Wild Berry



River Rock



Pine Cone

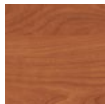


Graphite

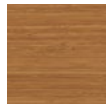
### Laminate Tops



Kensington  
Maple



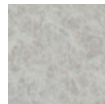
Wild Cherry



Asian Sun



Montana  
Walnut



Titanium  
Evolve



Titanium Evolve  
Game Top

### Steel Top



Stainless  
Steel Inlay

### Legs



Black



Metallic Silver

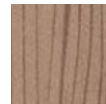
## Prodigy® Bedroom Furniture



### Colors



Harvest



Java

## Titan® Bedroom Furniture



### Steel Colors



Khaki



Ebony

### Laminate



Wild Cherry

## Attenda® Bedroom Furniture



### Colors



Lagoon



River Rock



Pine Cone



Graphite

### Laminate Top



Kensington  
Maple



Wild Cherry



Asian Sun



Montana  
Walnut

\*Laminate tops available on Deluxe Nightstand, Deluxe Open Chest and Desk.





## Protégé™ Bedroom Furniture

### Steel Colors

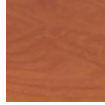


Khaki



Ebony

### Laminate



Wild Cherry

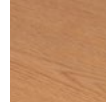


## Safehouse® Bedroom Furniture

### Wood



Wild Cherry



Oak



## Stack-A-Bunk®

### Colors



River Rock

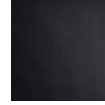


Lagoon



## SafeStore

### Color



Black Max

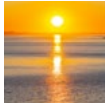


## SafeDoor® | Anti-Ligature Door

### Colors



River Stone



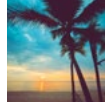
Golden Sunset



Autumn Waterfall



Spring Blossom



Tropical Beach



Cascading Waterfall



Pine Woodgrain



Teak Woodgrain



## Comfort Shield® Sealed Seam Mattress

### Mattress Material Colors



Norix Blue



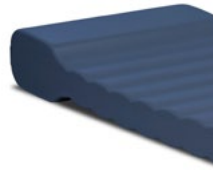
Silver Secure



Black Max



Clear



## Comfort Shield® Seamless Mattress

### Color



Slate



## IntelStation® Video Visitation

### Seat Colors



Lagoon



Sea Spray



Wild Berry



River Rock



Pine Cone



Graphite



Raven



Stainless Steel

### Cabinet



Black Laminate



Stainless Steel

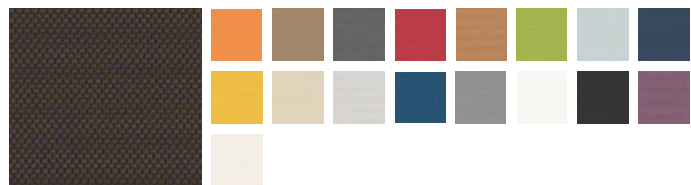
# Norix Fabric Offerings

## Fabric Library - Grade B

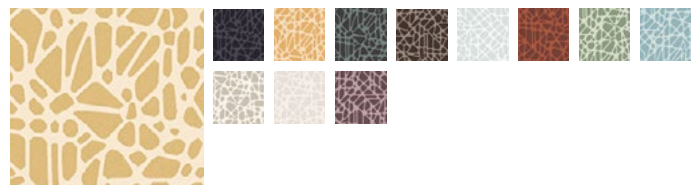
### Core



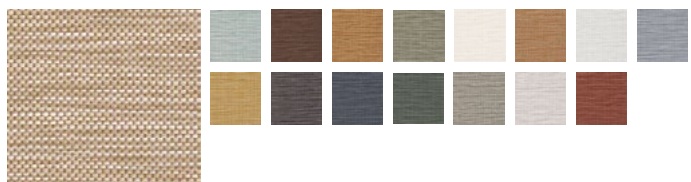
### Amplify



### Route



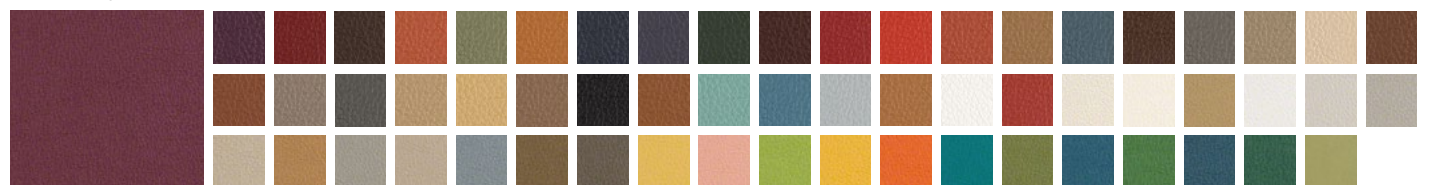
### Weft



### Rally



### Cassidy



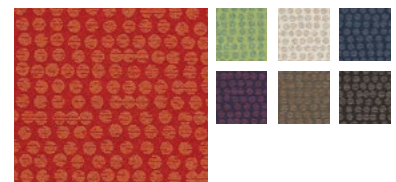
### Carlisle



### Shantung




### Polka

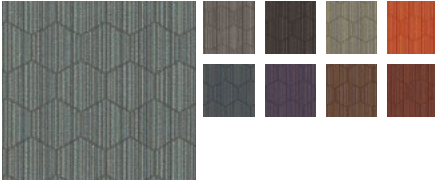


Fabric Library - Grade B - *Continued*

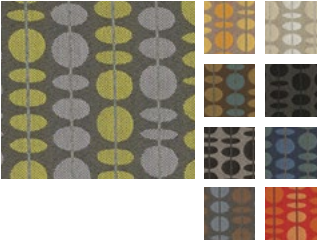
**Tribeca** *Performance fabric*

A color palette for Tribeca performance fabric. It features a large swatch of dark grey fabric on the left. To its right is a grid of 18 color swatches arranged in three rows: the first row has five swatches (light grey, beige, yellow, olive, dark grey), the second row has five swatches (orange, red, pink, maroon, green), and the third row has three swatches (dark green, teal, dark blue).


**Hive** *Performance fabric*

A color palette for Hive performance fabric. It features a large swatch of dark green fabric with a subtle geometric pattern on the left. To its right is a grid of 10 color swatches arranged in two rows: the first row has four swatches (dark brown, dark grey, olive, orange) and the second row has three swatches (dark blue, purple, dark red).

**Retrograde** *Performance fabric*

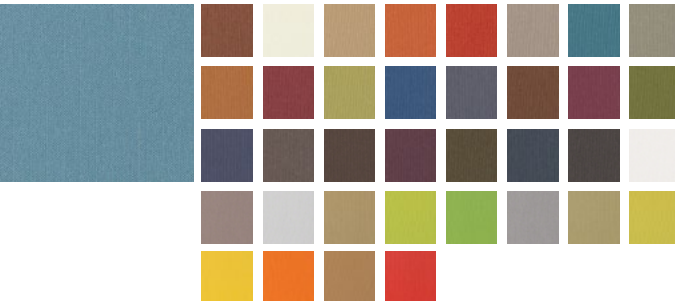
A color palette for Retrograde performance fabric. It features a large swatch of dark grey fabric with a pattern of overlapping circles in yellow and green on the left. To its right is a grid of 15 color swatches arranged in three rows: the first row has five swatches (yellow, orange, grey, dark grey, dark red), the second row has five swatches (dark blue, dark green, dark red, dark blue, dark red), and the third row has five swatches (dark blue, dark green, dark red, dark blue, dark red).

**Shift** *Performance fabric*

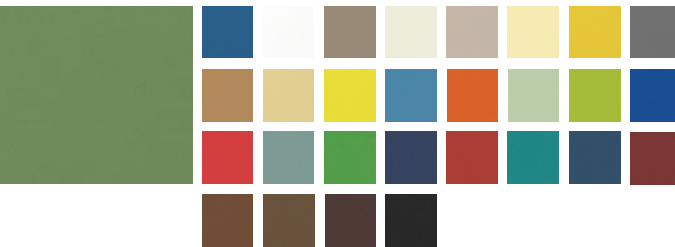
A color palette for Shift performance fabric. It features a large swatch of red fabric on the left. To its right is a grid of 15 color swatches arranged in two rows: the first row has eight swatches (light grey, white, pink, yellow, teal, blue, dark grey, green) and the second row has seven swatches (teal, blue, grey, orange, green, brown, dark grey).

Fabric Library - Grade C


**Tessuto** *Vinyl fabric*

A color palette for Tessuto vinyl fabric. It features a large swatch of blue-grey fabric on the left. To its right is a grid of 28 color swatches arranged in four rows: the first row has eight swatches (brown, beige, tan, orange, red, grey, teal, dark grey), the second row has eight swatches (orange, red, olive, blue, dark blue, brown, maroon, green), the third row has eight swatches (dark blue, brown, dark brown, dark red, dark green, dark blue, dark grey, white), and the fourth row has four swatches (brown, grey, tan, green).

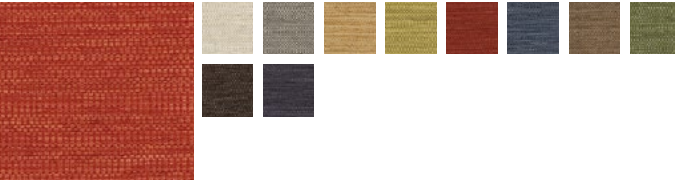
**Clean Slate** *Vinyl fabric*

A color palette for Clean Slate vinyl fabric. It features a large swatch of green fabric on the left. To its right is a grid of 20 color swatches arranged in four rows: the first row has eight swatches (blue, white, brown, beige, tan, yellow, olive, grey), the second row has eight swatches (brown, yellow, yellow, blue, orange, green, green, blue), the third row has eight swatches (red, grey, green, dark blue, red, teal, dark blue, dark red), and the fourth row has four swatches (brown, brown, dark brown, dark grey).


**Outlander** *Performance fabric*

A color palette for Outlander performance fabric. It features a large swatch of teal fabric on the left. To its right is a grid of 20 color swatches arranged in four rows: the first row has eight swatches (beige, tan, tan, brown, grey, brown, orange, orange), the second row has eight swatches (pink, grey, olive, red, red, grey, blue, green), the third row has eight swatches (brown, red, dark brown, dark blue, green, brown, purple, black), and the fourth row has four swatches (brown, red, dark brown, dark grey).


**Stellar** *Performance fabric*

A color palette for Stellar performance fabric. It features a large swatch of red fabric on the left. To its right is a grid of 10 color swatches arranged in two rows: the first row has eight swatches (beige, grey, tan, olive, red, dark blue, brown, green) and the second row has two swatches (dark brown, dark grey).

**Artisan** *Performance fabric*

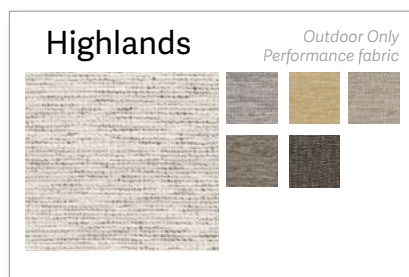
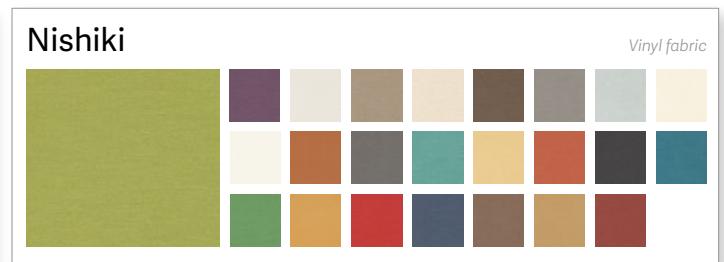
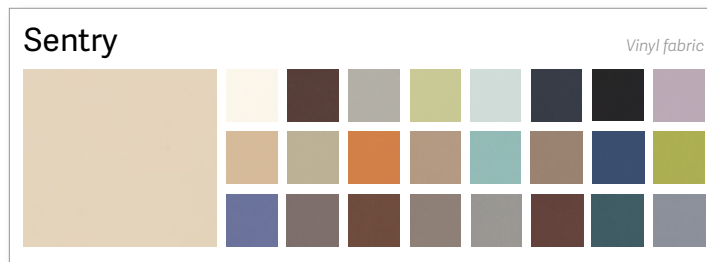
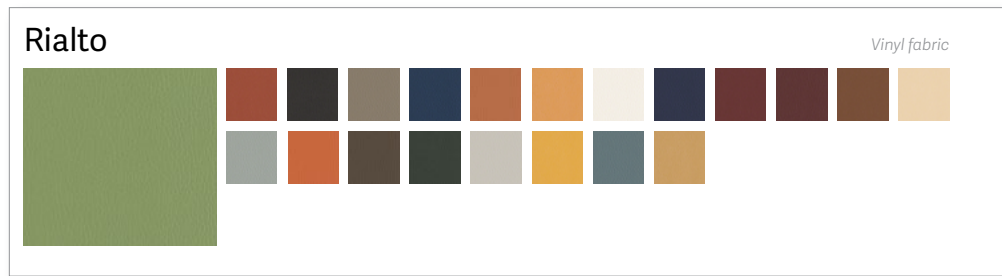
A color palette for Artisan performance fabric. It features a large swatch of dark purple fabric on the left. To its right is a grid of 15 color swatches arranged in three rows: the first row has five swatches (light grey, grey, beige, olive, dark grey), the second row has five swatches (dark green, dark grey, tan, red, dark green), and the third row has five swatches (dark brown, grey, dark brown, dark grey, red).

**Criss Cross** *Vinyl fabric*

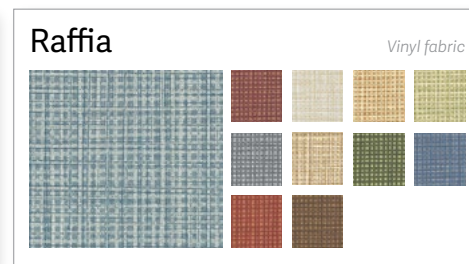
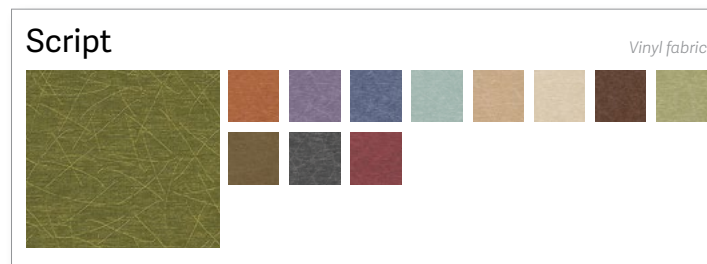
A color palette for Criss Cross vinyl fabric. It features a large swatch of light grey fabric on the left. To its right is a grid of 15 color swatches arranged in three rows: the first row has five swatches (beige, orange, tan, beige, grey), the second row has five swatches (dark blue, grey, green, orange, red), and the third row has five swatches (brown, brown, dark brown, dark blue, dark grey).



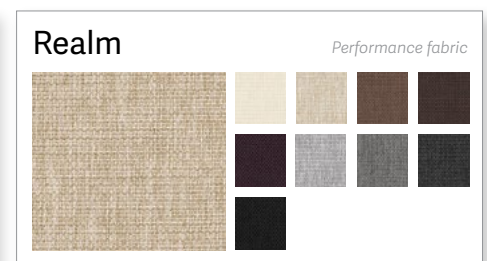
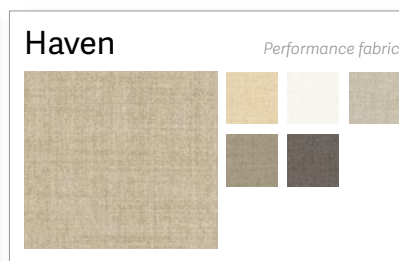
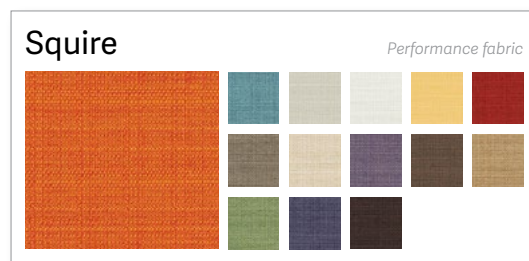
## Fabric Library - Grade C - *Continued*



## Fabric Library - Grade D

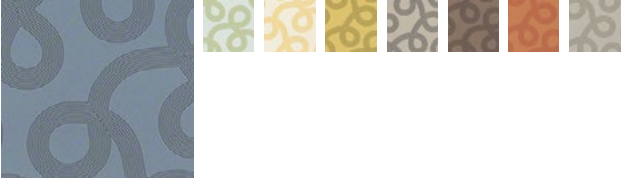


## Fabric Library - Grade E

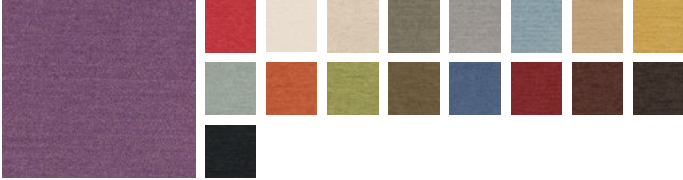


Fabric Library - Grade E - *Continued*

**Loophole** Vinyl fabric


A collection of fabric swatches for the Loophole series. It features a large swatch of a blue and grey patterned vinyl fabric on the left. To its right is a row of seven smaller swatches in various colors: green, yellow, orange, grey, brown, red, and grey.

**Posh** Performance fabric

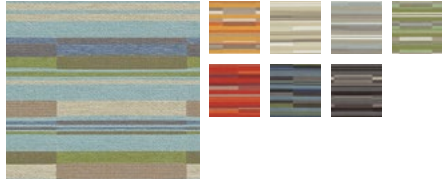
A collection of fabric swatches for the Posh series. It features a large swatch of a purple textured performance fabric on the left. To its right is a grid of 18 smaller swatches in various colors, including red, beige, olive, blue, and brown.

Fabric Library - Grade F

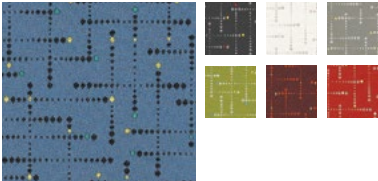
**Modena** Non-PVC fabric

A collection of fabric swatches for the Modena series. It features a large swatch of a beige textured non-PVC fabric on the left. To its right is a grid of 18 smaller swatches in various colors, including yellow, brown, green, orange, and red.

**Bass Line** Performance fabric

A collection of fabric swatches for the Bass Line series. It features a large swatch of a blue and green patterned performance fabric on the left. To its right is a grid of 12 smaller swatches in various colors, including orange, brown, and grey.

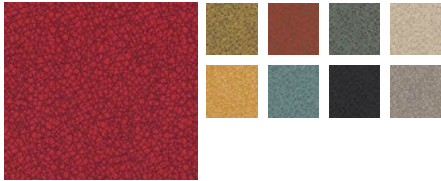
**Deflection** Performance fabric

A collection of fabric swatches for the Deflection series. It features a large swatch of a blue and black patterned performance fabric on the left. To its right is a grid of 12 smaller swatches in various colors, including green, red, and grey.


**Cirque** Vinyl fabric

A collection of fabric swatches for the Cirque series. It features a large swatch of a grey and black patterned vinyl fabric on the left. To its right is a grid of 12 smaller swatches in various colors, including yellow, green, and blue.

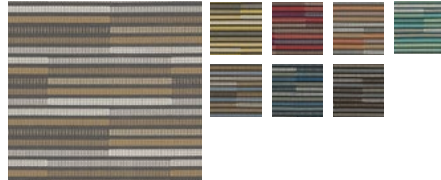
**Kinetic** Performance fabric

A collection of fabric swatches for the Kinetic series. It features a large swatch of a red textured performance fabric on the left. To its right is a grid of 12 smaller swatches in various colors, including yellow, green, and grey.

**Corium** Non-PVC fabric

A collection of fabric swatches for the Corium series. It features a large swatch of a blue textured non-PVC fabric on the left. To its right is a large grid of 36 smaller swatches in various colors, including brown, green, red, and grey.

**Kalahari** Outdoor Only  
Performance fabric

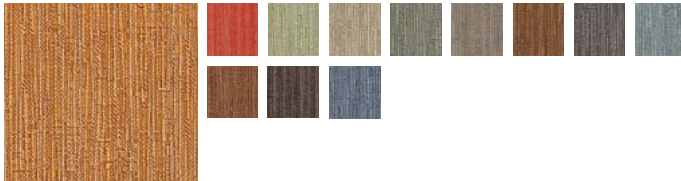
A collection of fabric swatches for the Kalahari series. It features a large swatch of a brown and black patterned outdoor performance fabric on the left. To its right is a grid of 12 smaller swatches in various colors, including yellow, green, and grey.

Fabric Library - Grade G

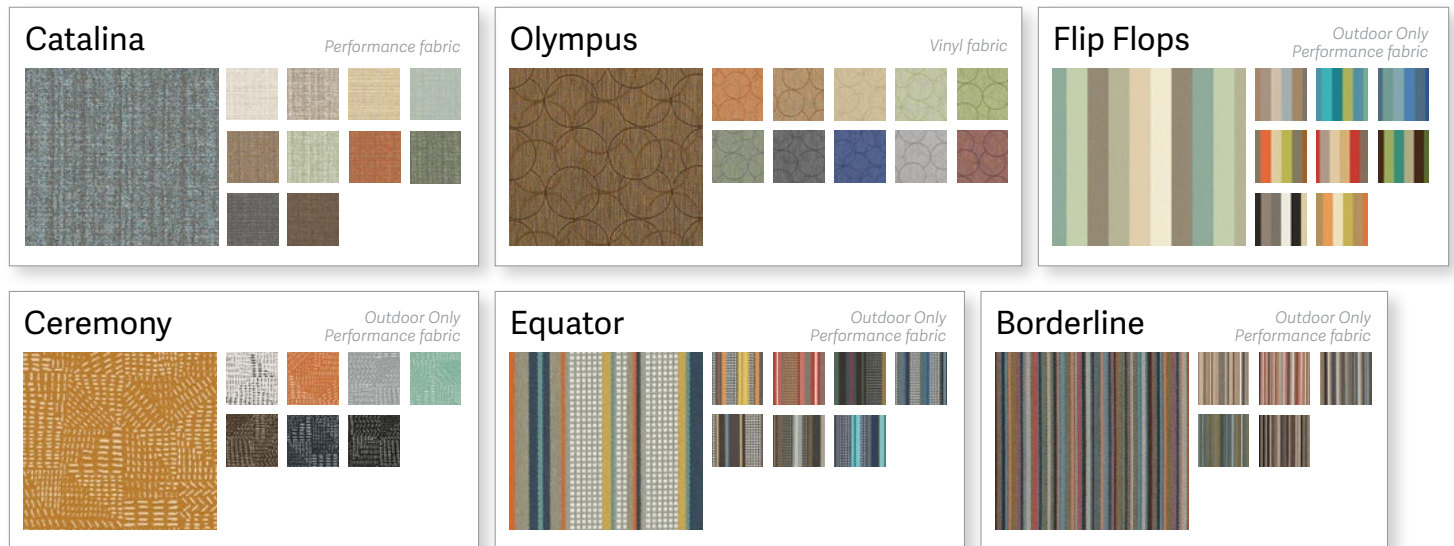
**Martini** Vinyl fabric

A collection of fabric swatches for the Martini series. It features a large swatch of a blue textured vinyl fabric on the left. To its right is a grid of 12 smaller swatches in various colors, including brown, green, and grey.

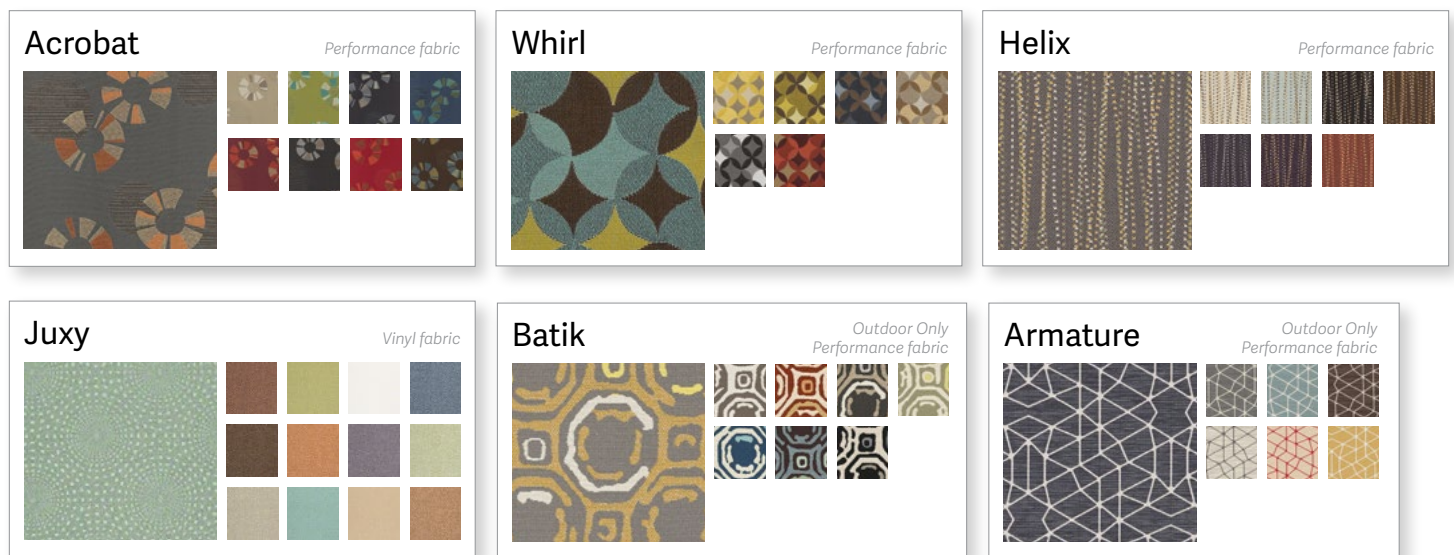
**Affinity** Vinyl fabric

A collection of fabric swatches for the Affinity series. It features a large swatch of a brown textured vinyl fabric on the left. To its right is a grid of 12 smaller swatches in various colors, including red, green, and grey.

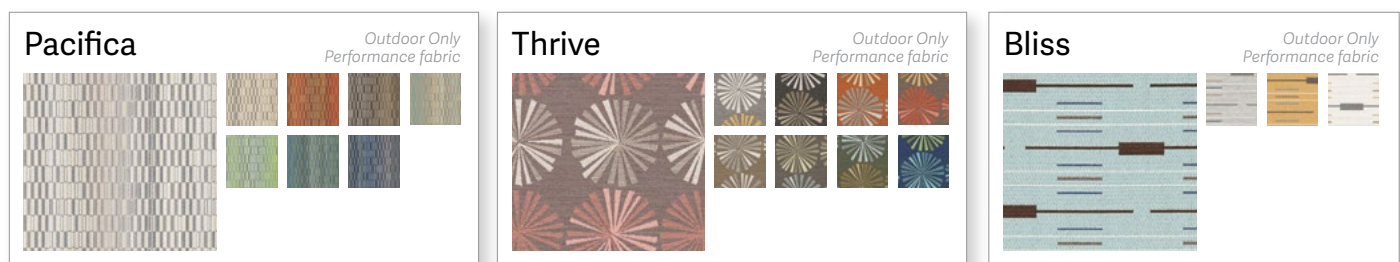
## Fabric Library - Grade G - *Continued*



## Fabric Library - Grade H

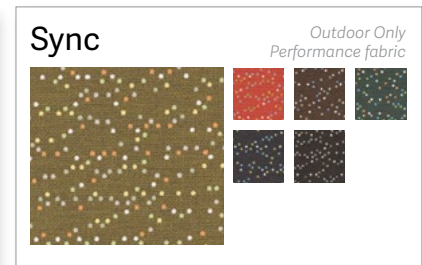
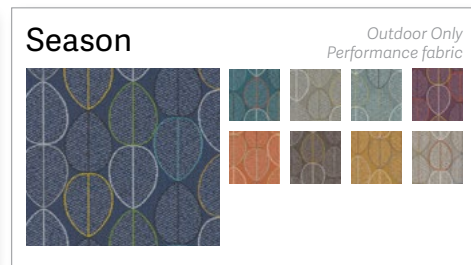
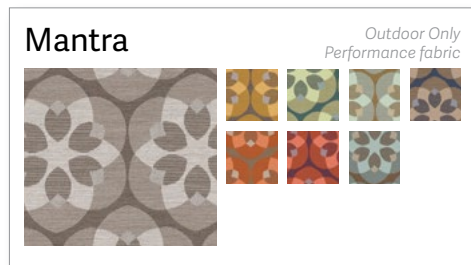


## Fabric Library - Grade I

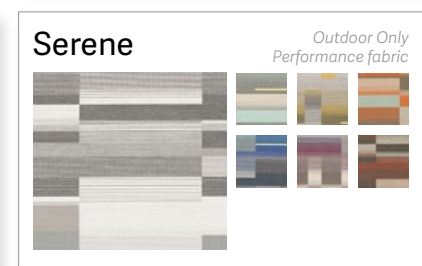
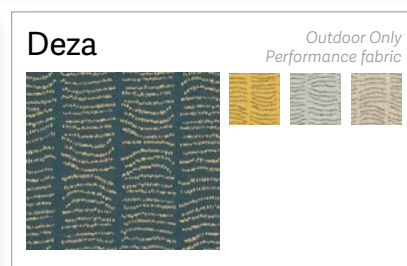
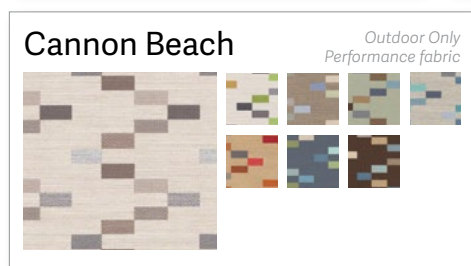
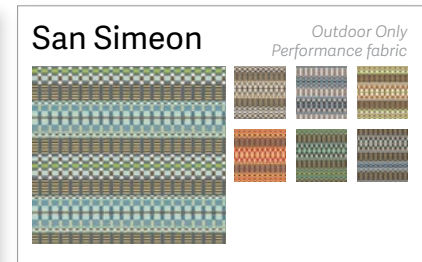
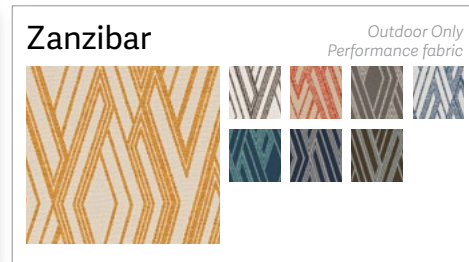




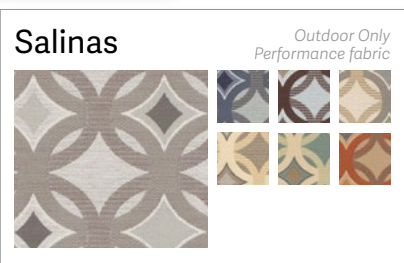
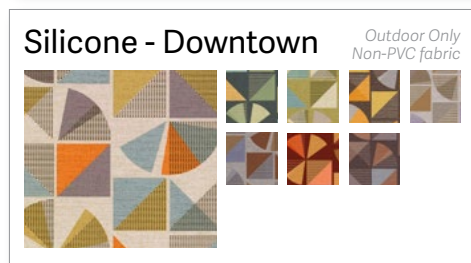
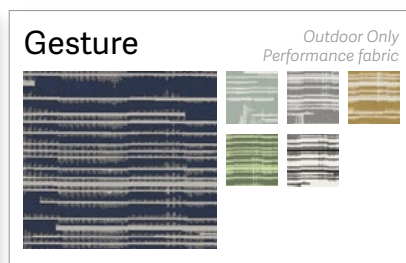
## Fabric Library - Grade I - *Continued*



## Fabric Library - Grade J



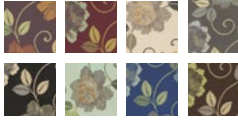
## Fabric Library - Grade K



# Fabric Library - Grade L

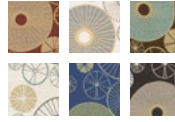
## Bloom

Outdoor Only  
Performance fabric



## Wish

Outdoor Only  
Performance fabric





AT NORIX, WE DESIGN INNOVATIVE, ROBUST FURNITURE  
THAT MEETS THE REAL-WORLD NEED FOR HUMANIZING  
CHALLENGING ENVIRONMENTS.



**NORIX**<sup>®</sup>

One Innovation Drive, West Chicago, Illinois 60185  
Phone: 630-231-1331 / Toll Free: 800-234-4900 / Fax: 630-231-4343  
furniture@norix.com | ©2022 Norix Group, Inc. | Printed 2/22

**NORIX.COM**