

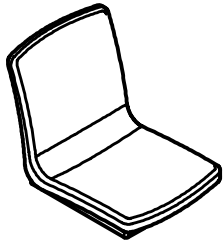
Assembly Notes: Norix is not responsible for any damage due to improper installation. If your shipment does not match the parts list, please contact Norix Customer Service at 800-234-4900. Norix reserves the right to modify design specifications at any time without an obligation to owners of previously sold products.

### Parts List

ITEM	QTY	DESCRIPTION	NORIX PART NO.
A	1	Oasis Seat (Color Option)	040-32XXX
B	1	Oasis Swivel	060-180
C	1	Oasis Seat Plate	060-193
D	2	Oasis Seat Swivel Plastic Spacer	060-188
E	2	Oasis Seat Swivel Cover	060-187-XX
F	1	Swivel Brace Weldment	060-181
G	4	1/4-20 x 2-1/2 Torx BH Screw	021-084
H	8	1/4 - 20 Nut	025-018
I	8	5/16-18 x 1" BH Screw	021-050
J	8	5/16 Lock Washer	025-011
K	8	11/32 Flat Washer Zinc Plate	026-006
L	8	1/4 Washer ANSI Zinc Plate	025-022
M	2	Oasis Seat Swivel Tube Spacer, Short	060-189
N	2	Oasis Seat Swivel Tube Spacer, Long	060-190

**All Seats, Swivels, Swivel Braces and Seat plates are interchangeable.**

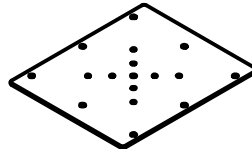
Tools Needed
Low RPM Variable Speed Drill
1/4" Hex Driver
Rubber Mallet
T27 & T40 Drivers
Wrenches
Thread Lock Compound (optional)
Masking Tape or equiv.
Torque Wrench



A



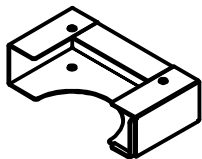
B



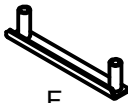
C



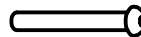
D



E



F



G



H



I



J



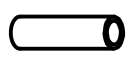
K



L



M



N

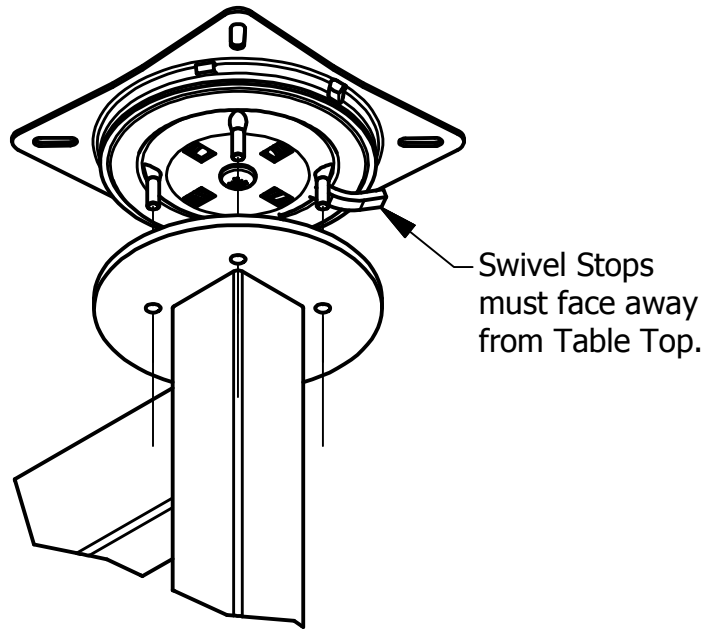
### Step 1 Swivel Installation

Set Swivel onto round mounting plate, ensuring that Swivel Stops face away from table.

Loosely assemble one Plastic Spacer to Swivel studs, with counterbored holes facing away from Swivel, using (2) 1/4" Flat Washers and (2) 1/4-20 Locking Nuts. Orient the Spacers as shown, however if the seam between the two parts is oriented 90 deg., it will not affect the function.

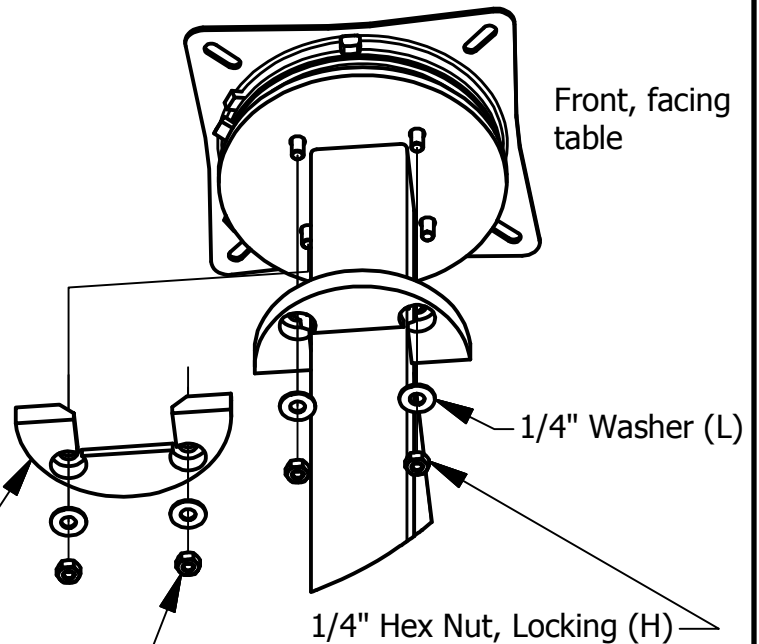
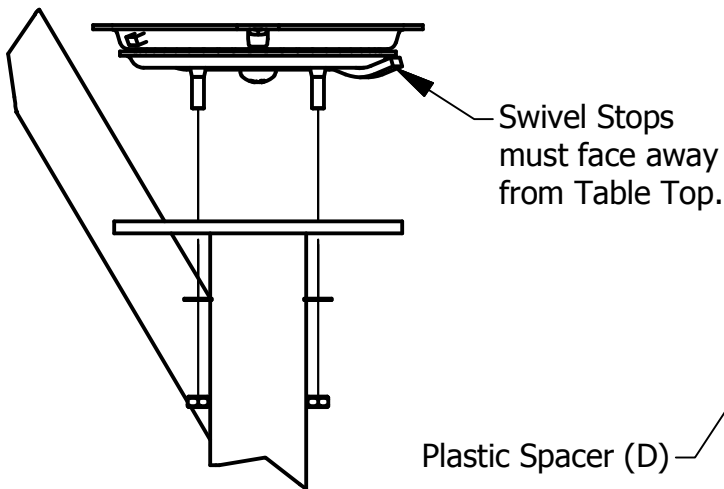
Repeat for second Plastic Spacer.

Tighten hex nuts to 85 in.-lbs. of torque (7.08 ft.-lbs.).

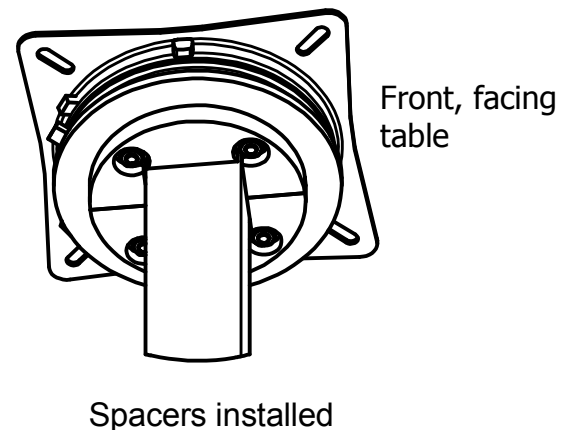


**OVERTIGHTENING HEX NUTS WILL DAMAGE SWIVEL.**

Repeat for All seat locations.



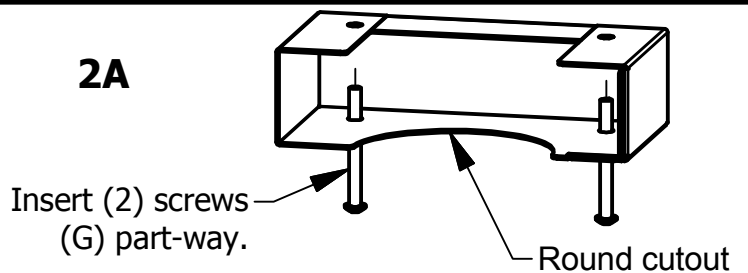
Apply 85 in.-lbs. (7.08 ft.-lbs.) torque.  
**OVERTIGHTENING WILL DAMAGE SWIVEL.**



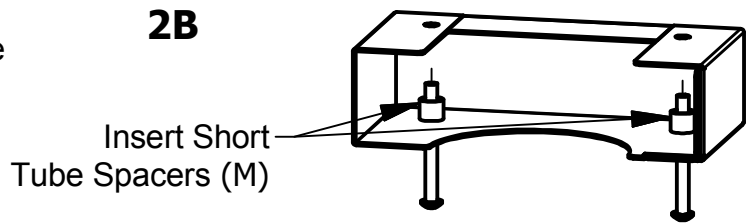
## Step 2 Install First Swivel Cover

The two cover parts are identical to each other.

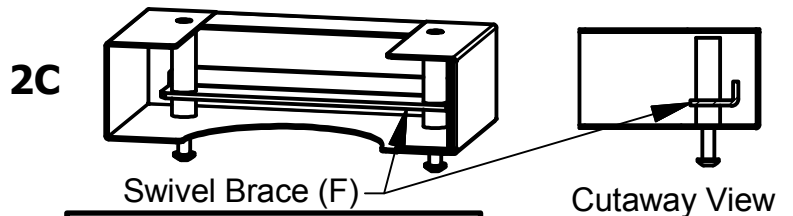
**2A)** Insert (2) 1/4-20 X 2-1/2" long screws part way into the holes on the side of one of the covers with the round cutout, as shown.



**2B)** Place (2) Short Spacer Tubes onto the screws, as shown.



**2C)** Place the Swivel Brace onto the screws, as shown. Refer to the cutaway view for correct orientation.

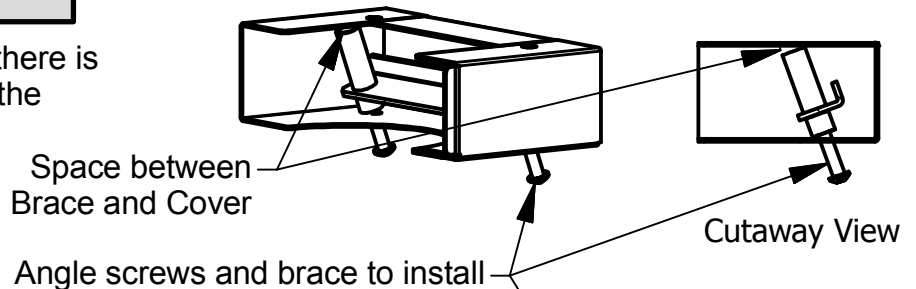


**Failure to install Swivel Brace will void warranty.**

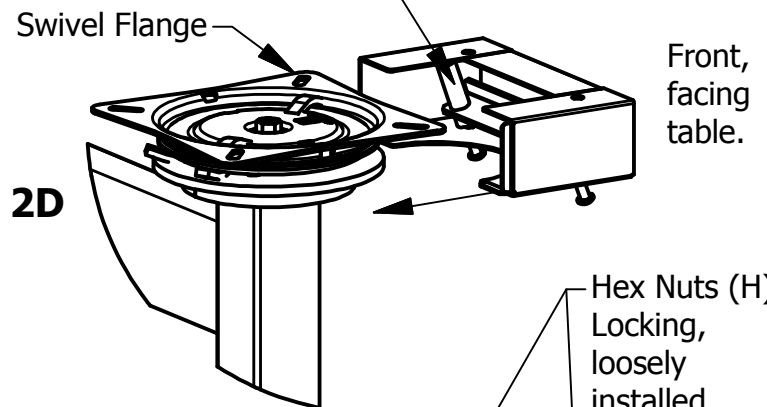
**This cover, with Swivel Brace, must be installed on the front side of the Swivel (facing the table).**

**Failure to install Swivel Brace will void warranty.**

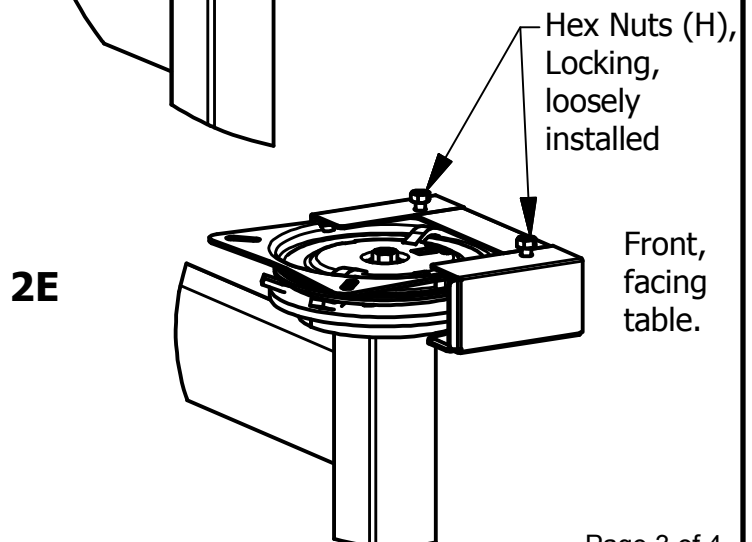
Pull the screws out just enough so that there is a space between the Swivel Brace and the inside of the cover, as shown.



**2D)** Slide the cover assembly over the Swivel flange, while angling the screws and Brace slightly to allow the flange to fit between inside of the cover and the Swivel Brace tubes. This may be a snug fit, and may require a rubber mallet to tap the cover gently into place. If there is too much binding between parts, a little lubricant will help the parts slide together.



**2E)** Once the cover is installed and the (2) screws can be pushed through the holes in the cover and the slots on the swivel flange, place (2) 1/4-20 Hex Nuts, Locking, loosely onto the screws to prevent them from falling out while installing the second cover.



### Step 3 Install Second Cover

**3A)** Insert (2) 1/4-20 X 2-1/2" long screws part way into the holes on the side with the round cutout, as was done with the first cover.

**3B)** Place (2) Long Tube Spacers over the screws, inside the cover, as shown.

**3C)** With the screws pulled out slightly and angled as shown, slip the cover over the swivel flange so that the tubes are captured between flange and inside cover. A rubber mallet can be used to tap the cover into place.

Once the cover is on, push the screws all the way through the swivel slots and install (2) 1/4-20 Hex Nuts, Locking, loosely onto the screws to prevent them from falling out.

**3D)** Square up the covers, pushing them snugly together. Actuate the swivel from side to side. There should be no binding. If any parts are binding, tap the cover assembly forward to ensure that the brace tubes are not making contact with internal parts. Swivel should swing freely approximately 60 deg. in each direction from center.

### Step 4 Install Seat Plate

**4A)** Temporarily place masking tape over the screw heads to hold them in place. Remove the (4) hex nuts.

**4B)** Place the Seat Plate, oriented correctly, over the screws and install (4) 1/4" Flat Washers and 1/4-20 Hex Nuts, Locking. Place washers on top of plate underneath hex nuts. Snug up the hex nuts.

**4C)** Actuate the swivel fully in both directions and check for binding. If there is any binding, tap the cover assembly toward the front of the seat slightly. If binding still exists, situate the (2) front screws (with brace) as far forward as possible. This should eliminate any binding.

**4D)** Tighten the Seat Plate onto the (4) screws and check again for binding by actuating the swivel fully in both directions.

### Step 5 Install Seat

Install the Seat onto the Seat Plate with (8) 5/16-18 X 1" Screws, (8) 11/32 Flat Washers, and (8) 5/16 Lock Washers. Remove tape holding screws.

