

# Project Case Study:

## Behavioral Healthcare – EastPointe Hospital



**Project Name** EastPointe Hospital Renovation

**Project Location** Daphne, Alabama

**Project Size** 66 bed, 36,000 s.f. facility

**Building Type** Psychiatric hospital

**Project Team** AltaPointe Health Systems, Inc.

Walcott Adams Verneville Architects, Inc.

Norix Group, Inc.

**Product List** Safehouse® Series Patient Room Furniture

Attenda® Series Patient Room Furniture

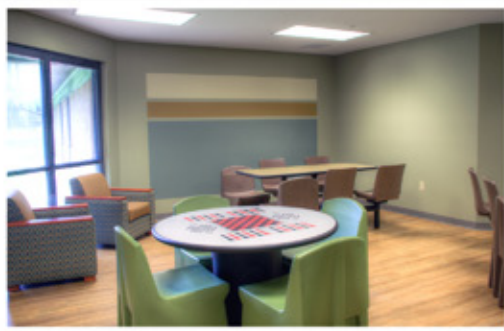
Hondo® Series Lounge Seating

Toughcare® Series Roto Molded Seating

Jupiter™ Series Tables

Oasis™ Series Cafeteria Tables

Hilltop Series Outdoor Furniture



# CASE STUDY

## DESCRIPTION:

AltaPointe's comprehensive network of behavioral and mental health care facilities promotes the wellness and recovery of people living with mental illness, substance abuse and intellectual disability issues. Its continuum of care includes hospital, outpatient and residential psychiatric and behavioral services for children, adolescents, adults and senior adults.

Operated by AltaPointe Health Systems, Inc., EastPointe's clinical and medical professionals assess and evaluate adults in psychiatric crisis. Treatment focuses on stabilizing psychiatric symptoms and preventing psychiatric commitment. Adults admitted to EastPointe will have exhibited life-threatening, destructive or disabling behavior or symptoms requiring 24-hour monitoring and assessment. Each patient completes a psychiatric diagnostic evaluation and receives 24-hour clinical care for an estimated three to seven day stay. The goal is for each patient to return home or to the least restrictive level of care as quickly as possible and to follow a comprehensive aftercare plan upon discharge. EastPointe is licensed by the Alabama Department of Public Health.

EastPointe also provides care to patients admitted involuntarily in a special 18-bed unit. After evaluation, professional staff members make a recommendation to the probate court of record regarding the patient's need for involuntary commitment or treatment in a less restrictive setting. Patients admitted voluntarily receive treatment in a separate designated unit. AltaPointe purchased the property – which was previously owned by the Alabama Department of Mental Health – in 2008 for \$4.4 million and invested \$3.2 million in extensive renovations and remodeling, which began in January 2011.



## OVERALL PROJECT GOAL / PHILOSOPHY

"The building's need for renovation provided an opportunity to design a hospital with a purpose that goes beyond treatment," Turk Schlesinger, AltaPointe CEO, said. "Our goal with EastPointe's design and décor was to completely erase stereotypes typically related to psychiatric hospitals."

## FURNISHING GOALS

As a psychiatric facility, the furnishing needs presented a unique challenge – furnishings that are beautiful, comfortable and durable, yet don't pose a risk of harm to the facility's clients. Ultimately, the goal of the furnishings was to provide the feeling of "home" in this residential treatment facility.

"In keeping with the goals of the owners, the design of the facility including the furniture was to incorporate materials and colors that evoke feelings of warmth and personality in lieu of the typical sterile environment found in many facilities," Mac Walcott, with Walcott Adams Verneville Architects, Inc., said. "The colors, finishes and style of the furniture helped achieve those goals by providing a comforting environment."

**Accessibility Goal:** Furniture should accommodate people regardless of disability.

**Functional Goal:** Furniture should be strong, able to accommodate adults of all sizes, be comfortable and easy to clean and sanitize.

**Aesthetic Goal:** From the beginning, the goal of this renovation was to develop a facility that was welcoming, with a feel like home. The furniture was an integral part of ensuring this goal was met.

**Secure/Safe Goal:** Furniture should be structurally robust, tamper resistant and safe for patients and staff.



### SELECTION PROCESS:

After an extensive search for products that would meet the owner's requirements, it was determined that Norix Group, Inc. would provide the furnishings. Consultative sales specialist Tommy Jernigan presented a variety of options to the design team. Working directly with Norix, furniture selections were made based on functionality, durability and aesthetics.

**"We have been very pleased with the durability of the furnishings provided by Norix...The installation team was thorough and timely in their completion of work."**

### POST-OCCUPANCY EVALUATION:

EastPointe Hospital admitted its first patient on July 16, 2012. "We have been very pleased with the durability of the furnishings provided by Norix," Jarrett Crum, EastPointe Hospital Administrator, said. "The finishes allow for easy clean-up with consumers who are unable to attend to their basic functions. We had some initial concerns regarding the limited color choices, but have found that Norix colors work well with our interior design. The installation team was thorough and timely in their completion of work. The ability to increase the weight of the rotomolded chairs by ballasting with sand has limited destruction opportunities by patients who may become agitated due to their illness and limited comprehension levels."



**Norix Blog**

## ABOUT NORIX GROUP:

For more than 30 years Norix has provided secure furnishings and fixtures for every application. The product line has expanded to include industries and environments such as corrections, behavioral healthcare, transportation, educational institutions, fire/police stations, commercial facilities and military installations. All furniture is designed for safety, security and extreme durability. Norix intensive-use furniture is extraordinary by design, surpassing industry standards for strength, safety and long-term performance. The privately held company is headquartered in West Chicago, IL with sales representatives and dealers throughout the U.S. In 2012, Norix launched Safe Environments a news and information blog serving architects, designers, administrators, and facility managers involved in the design, construction, and operation of challenging environments. For more information, call 800-234-4900 or visit: [www.norix.com](http://www.norix.com).

## ADDITIONAL INFORMATION:

**AltaPointe Health Systems, Inc** - <http://www.altapointe.org/>

**EastPointe Hospital** - <http://www.altapointe.org/eastpointe.php>

**Walcott Adams Verneuille Architects, Inc.** - <http://www.wavarchitects.com/>

**Alabama Department of Public Health** - <http://www.adph.org/>

**Contributions of Color, Whitepaper by Tara Hill** - [http://www.norix.com/contributions\\_colors.asp](http://www.norix.com/contributions_colors.asp)

**Top 5 Furniture Considerations for Patient Safety in Behavioral Healthcare Settings White Paper** - <http://www.norix.com/download-whitepaper-patient-safety.asp>