

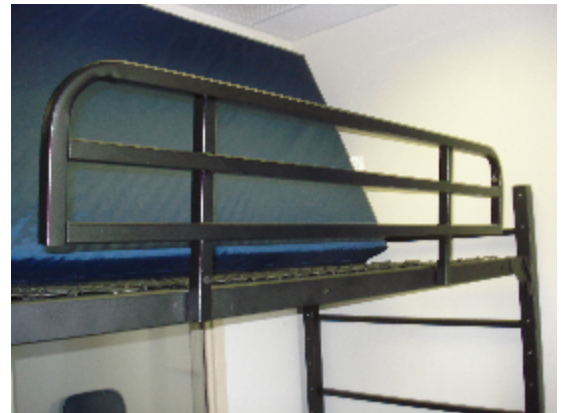
Titan Safety Rail Secure Tab Assembly Instructions

www.norix.com • TEL 800 234-4900

Assembly Notes: Norix is not responsible for any damage due to improper installation. If your shipment does not match the parts list, please contact Norix Customer Service at 800-234-4900. Norix reserves the right to modify design specifications at any time without an obligation to owners of previously sold products.

Tools Needed

Low RPM Variable Speed Drill



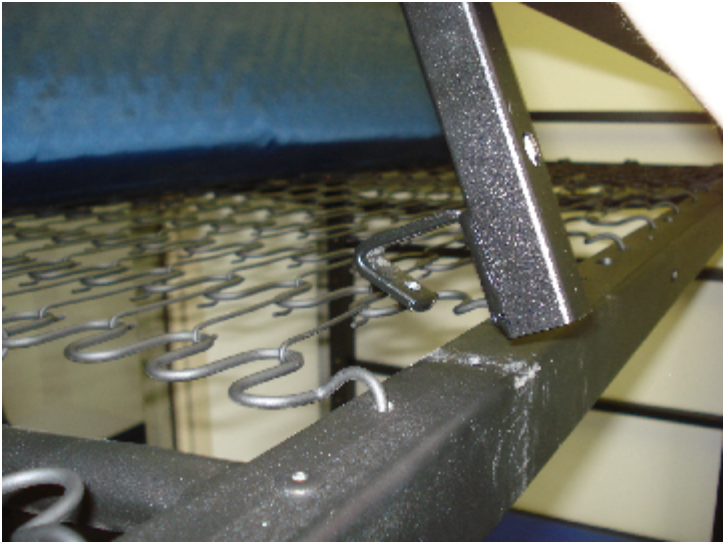
Components packaged with Titan Safety Rail.

New components:

2 - 021-062 : Screw, Machine
1/4"-20 x 1"L, Torx T-27, Black
Oxide

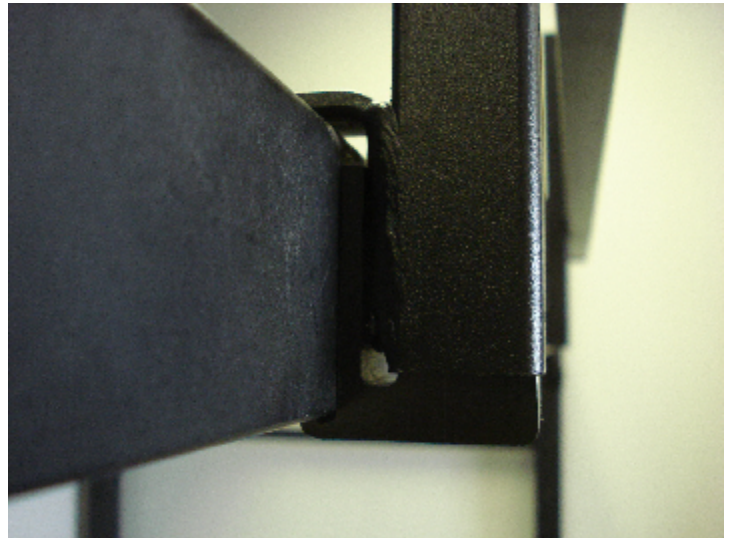
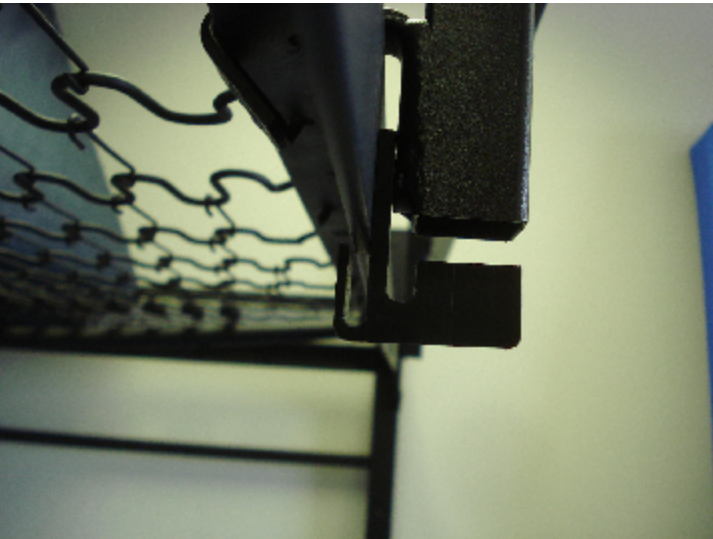
2 - Titan Safety Rail Secure
Tabs





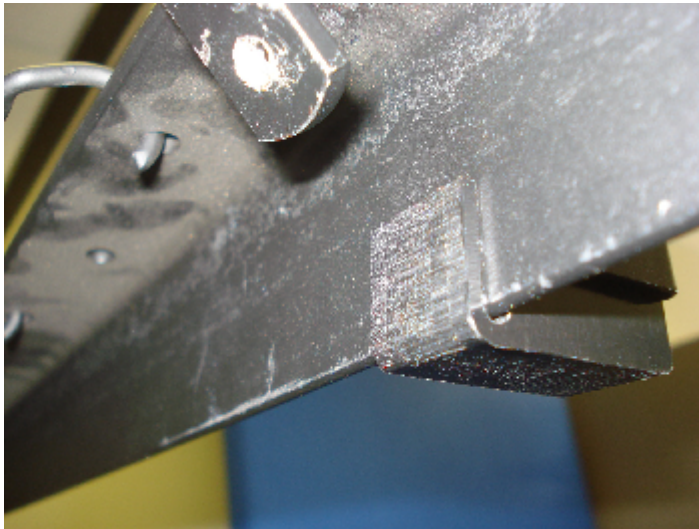
Step 1:

First hook the safety rail on to the bed in desired location.



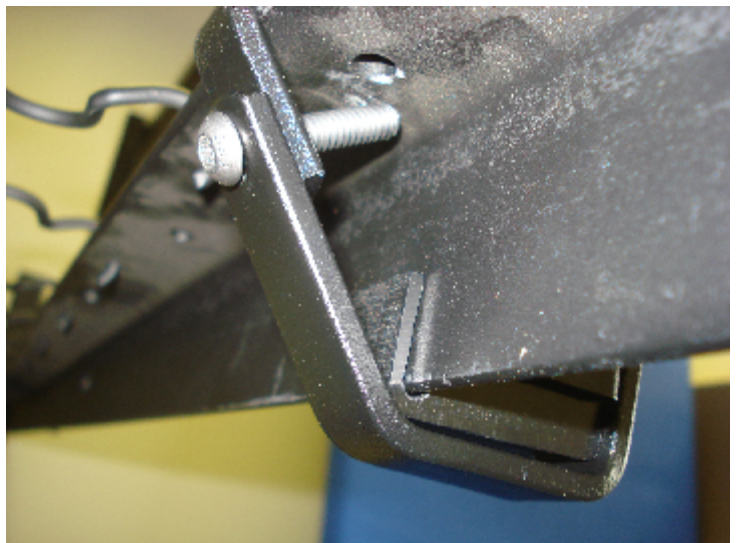
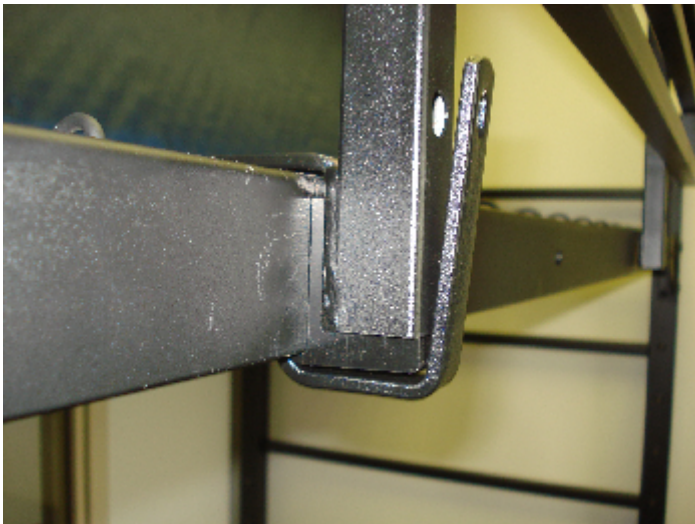
Step 2:

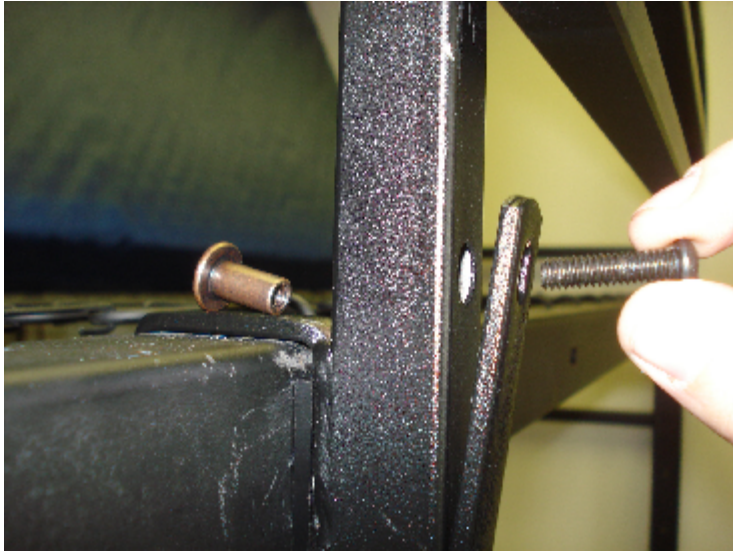
Second, insert the (2) secure tabs into the bottom of each tube at the fastening points.



Step 3:

Now attach the angle bracket to the back side of the safety rail.
Swing the angle bracket so that the holes for the second secure point line up.





Step 4:

Insert (1) barrel nut at the back side to the second secure point and (1) 1" Bolt in the front fastening them together.

