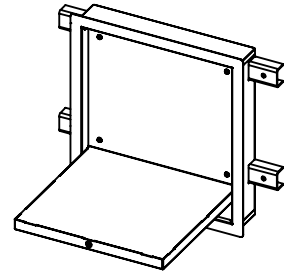


Recessed Shower Seat Assembly Instructions

Model Number
ISS-100

www.norix.com • TEL 800 234-4900



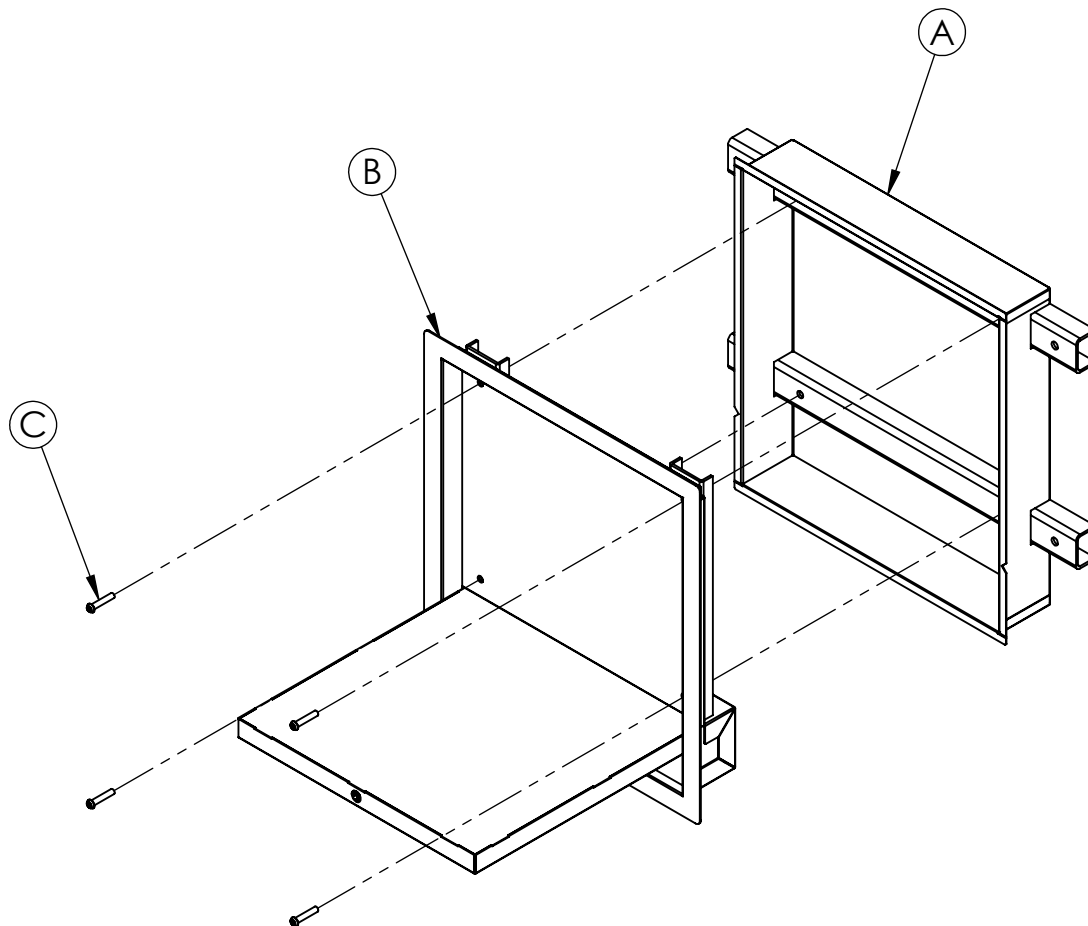
Assembly Notes: Norix is not responsible for any damage due to improper installation. If your shipment does not match the parts list, please contact Norix Customer Service at 800-234-4900. Norix reserves the right to modify design specifications at any time without an obligation to owners of previously sold products.

Parts List

ITEM	QTY	DESCRIPTION
A	1	Wall Mount Assembly
B	1	Folding Seat Assembly
C	4	Socket Cap Screw, SST Btn. Hd., 1/4-20 UNC x 1 1/2
D	1	T27 Torx Insert Bit

Tools Needed

1/4" Hex Driver

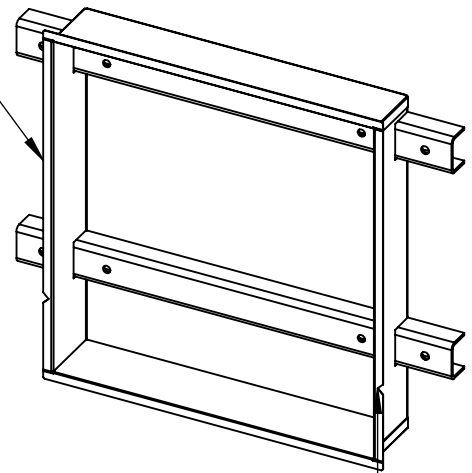


FACE MUST BE FLUSH
WITH FINISHED WALL

STEP 1: Mount Wall Mount Assembly (A) at pre-determined wall* location using hardware approved for project installation.

*Wall Mount Assembly must be securely anchored to supporting wall to function properly. Face must be flush in all cases. For different wall types follow these guidelines.

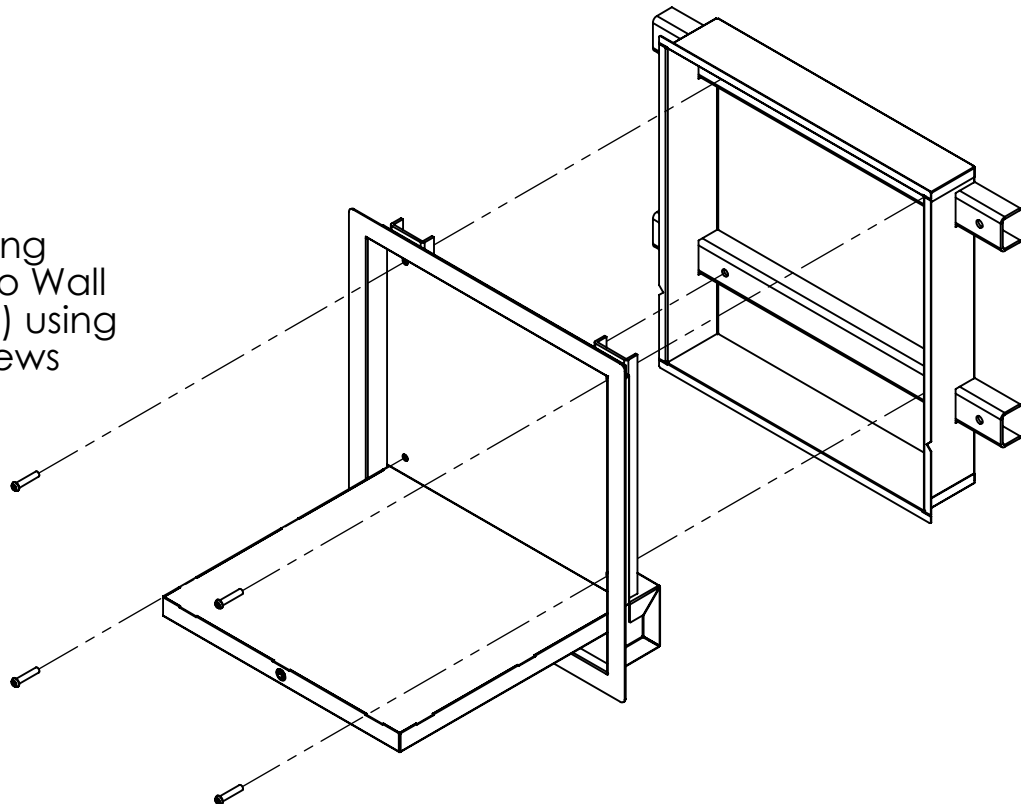
- 1) In hollow walls - Ensure secure structural reinforcement when mounting Wall Mount Assembly.
- 2) In concrete walls - Install at pre-determined location and pour in place.
- 3) In concrete block walls - Build Wall Mount Assembly into wall and grout into place.



RECOMMENDED MOUNTING
HEIGHT - 19" ABOVE
FINISHED FLOOR

FLOOR

STEP 2: Secure Folding Seat Assembly (B) to Wall Mount Assembly (A) using (4) Socket Cap Screws (C).



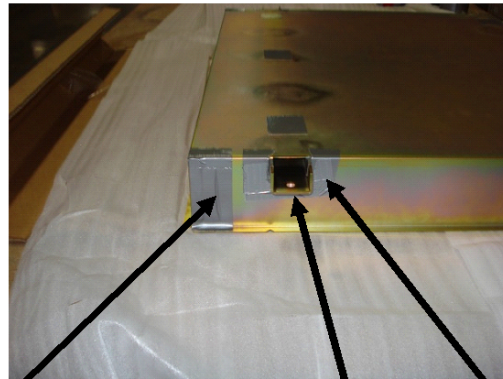
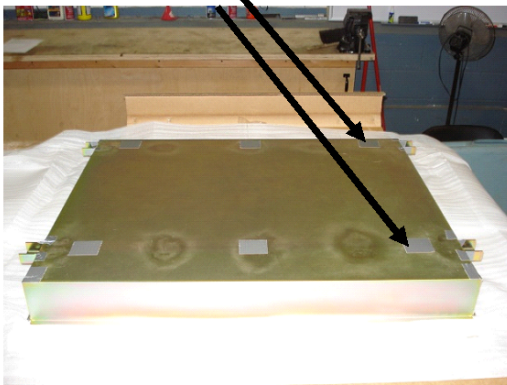
For proper installation and to eliminate water seepage into the wall:

NOTE: Final Installation into wall requires a Silicone Caulk around entire Folding Seat Assembly.

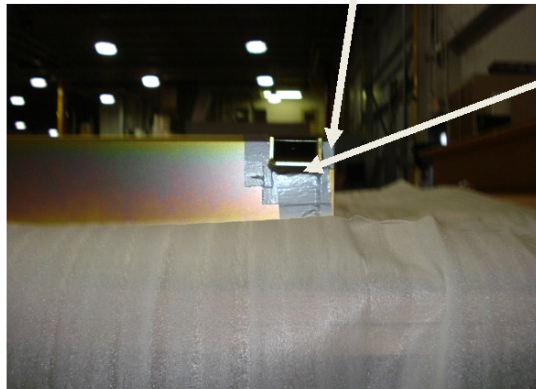
Product Required: Eternabond, Webseal Waterproof Tape (20' required per complete unit) Manufacturers instructions must be followed. Also see Eternabond Tips and Installation Instructions (http://www.eternabond.com/v/vspfiles/assets/images/eb_hvac_tips_install.pdf).

Wall Mount Assembly

2" X 2" Over Mounting Holes (6) Places



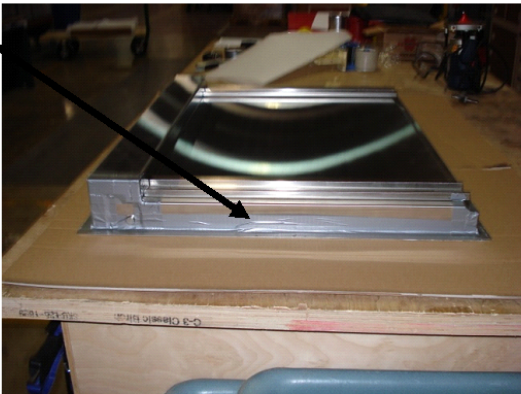
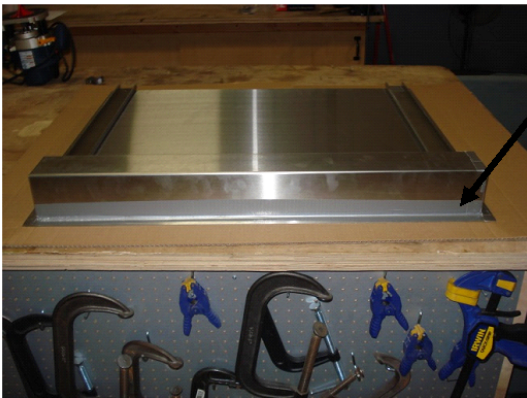
Cover Edge Flange Seams



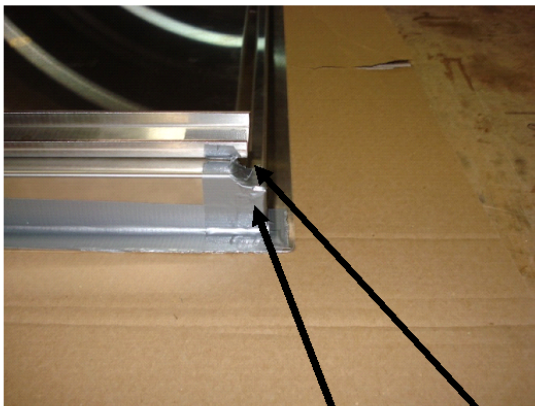
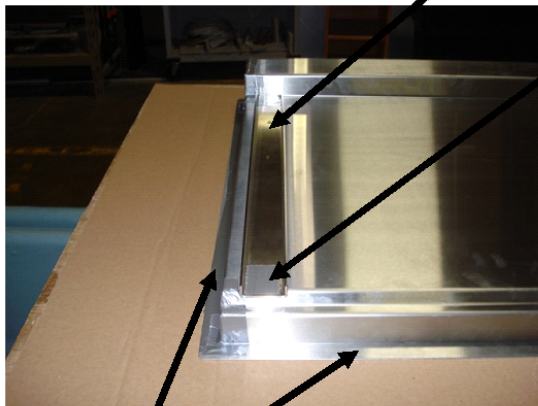
Cover Seams Under and Around U-Channel (4) Places

Folding Seat Assembly

Tape Top, Bottom, and Sides Being sure to cover seams



Cover Mounting Holes (4) Places



Apply Silicone Caulk Around entire flange (4) sides for final installation

Cover All Vertical and Horizontal Seams

