

norix[®]
FURNITURE
Engineered to Endure™

1800 W. Hawthorne Lane, Suite N.,
West Chicago, Illinois 60185
norix.com
Phone: 630-231-1331 | Toll Free: 800-234-4900 | Fax: 630-231-4343
7/19 | ©2019 Norix Group, Inc.

Titan[®]

Bedroom
Furniture



norix[®]
FURNITURE
Engineered to Endure™



Titan® Series

Looking for residential furniture that can endure years of intensive-use in your facility's demanding environment? Look no further than the Titan® Series from Norix – a complete line of steel case goods that combines functional versatility with the institutional durability of all-steel construction.

Steel: The Value Choice

There's no substitute for the strength, safety and durability of steel furniture, and Titan has emerged as the product of choice in institutional settings. Why? Because Titan was designed to perform in the most challenging environments.

Titan is an ideal choice to replace problem wooden furniture -- its all steel construction delivers maximum strength, institutional durability, and peace of mind. Titan products are heavy...and heavy duty. You don't have to worry that they'll be invaded by bedbugs, picked apart, or broken through intensive-use. Steel stands the test of time, and provides the best value option. Day in and day out – year after year – Titan delivers worry-free performance.

The Strength of Steel, plus Wood Grained Style

Titan chests, nightstands and desks come standard with institutional grade, high-pressure laminate top surfaces. Want a more residential look for your rooms? Drawer fronts can also be accented with an optional matching laminate. Our HPL tops and drawer fronts are attached with steel to steel connections for strength and durability. Coordinate the residential look with the same laminate on the doors of a wardrobe and headboards for a bed.

Engineered for Safety and Built to Last

Titan products offer built-in safety and security features you expect from Norix. All steel construction ensures that Titan products will stand up to the demands of your challenging environment. Titan products feature a 10-year limited replacement warranty for materials and workmanship.

- Rounded edges for safety and long-term durability.
- Drawers feature an integrated hasp mechanism that locks all drawers and accepts a padlock.
- 5-side steel drawer box for strength and rigidity. Drawer glides are welded to drawer body – with no moving parts to break or wear out. Non-removable drawers are standard.
- Wardrobes feature 5-knuckle hinges welded to cabinet frame for strength and durability.

A Titan Bed for Every Need

The Titan series features a wide array of beds, for every residential need. Panel base beds are available with or without drawers. The same panel base bed can be fitted with bunkable end frames. Perhaps you need a simple frame-style bed that can accommodate a two drawer chest beneath the bed deck. All Titan beds fit mattresses 36"W x 80"L, additional sizes vary by model.

Optional headboards and footboards add a touch of wood-grained style, with institutional durability. Further accent the bed with matching laminate drawer fronts. Pick the bed that's right for you, and select from a variety of options.



Panel Base Bed

With steel deck and adjustable floor leveler glides. Options: Headboard, leg extensions.

Model #TNT1141

Dimensions: 38"W x 82"L x 11"H.

Captain’s Bed

With steel deck, 2 non-removable drawers, and adjustable floor glides. Larger capacity, 2.0 cu.ft. drawers feature recessed padlock hasp locking mechanism. Options: Headboard, leg extensions.

Model #TNT1042 (Steel Drawers)

#TNT1242 (Laminate Drawers)

Dimensions: 38"W x 82"L x 11"H.

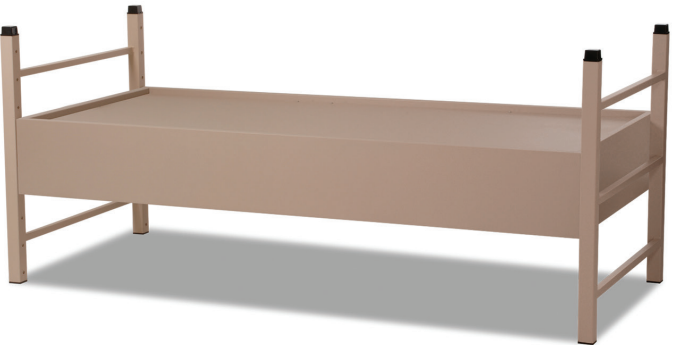


Bunkable Panel Base Bed

With steel deck, steel end frames for optional bunking. Ships K.D. Options: Headboard, footboard, bunk-locking clamps, bottom closure panel, ladder, safety rails, floor anchor kit.

Model #TNT1111

Dimensions: 38.5"W x 86.25"L x 37"H.



Bunkable Captain’s Bed

With steel deck, steel end frames for optional bunking, 2 non-removable drawers. Larger capacity 2.0 cu.ft. drawers feature padlock hasp locking mechanism. Ships K.D. Options: Headboard, footboard, laminated drawer fronts, bunk-locking clamps, bottom closure panel, ladder, safety rails, floor anchor kit.

Model #TNT1012 (Steel Drawers)

#TNT1212 (Laminate Drawers)

Dimensions: 38.5"W x 86.25"L x 37"H.



Panel Base Bunk Bed

With steel deck, full-length steel end frames for permanent double bunking. Ships K.D.
Options: Headboard, footboard, bottom closure panel, ladders, safety rails, floor anchor kit.

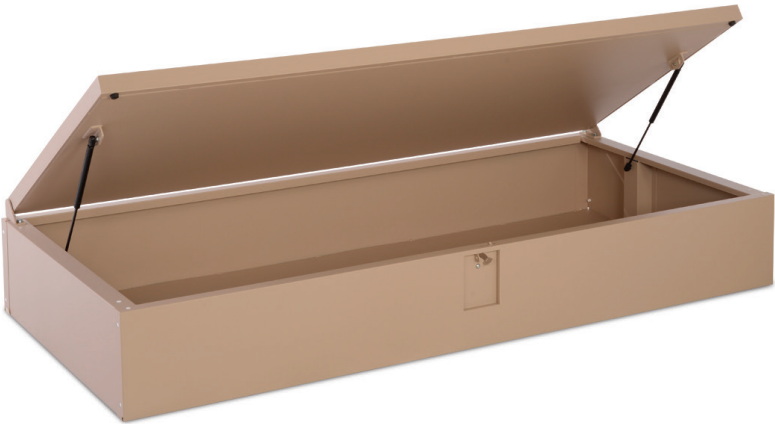
Model #TNT1151
Dimensions: 38.5"W x 86.25"L x 72"H



Lift Deck Bed

Steel deck bed with recessed padlock hasp and gas springs with dynamic dampening for accessing generous storage compartment.

Model #TNT1646
Dimensions: 38"W x 82"L x 13.75



Captain's Bunk Bed

With steel deck, steel end frames for permanent double bunking, 2 non-removable drawers. Larger capacity, 2.0 cu.ft drawers feature recessed padlock hasp locking mechanism.
Ships K.D. Options: Headboard, footboard, bottom closure panel, ladder, safety rails, floor anchor kit.

Model #TNT1052 (Steel Drawers)
#TNT1252 (Laminate Drawers)
Dimensions: 38.5"W x 86.25"L x 72"H.

Bunkable Lift Deck Bed

Steel deck bed with steel end frames for optional bunking . Recessed padlock hasp and gas springs with dynamic dampening for accessing generous storage compartment. Ships K.D.

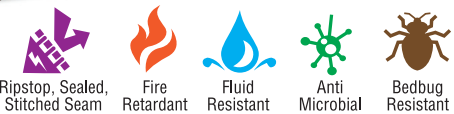
Model #TNT1616
Dimensions: 38.5"W x 86.25"L x 37"H



Family Bed

Unique double bunk offers full size 54" x 80" sleep surface on lower bunk and 36" x 80" size on upper bunk. Includes headboards, footboards and side rails. CPSC compliant. Ships K.D.
Options: Floor anchor kit.

Model #TNT1991
Dimensions: 57"W x 86.25"L x 72"H



Comfort Shield® Mattresses

- Complete the bed ensemble with a Norix Comfort Shield® Mattress.
- Available in inverted seam and sealed seam construction, in a variety of grade levels, to suit your needs and budget.
 - Sealed seem construction offers protection gainst bedbugs and moisture.
 - Ships economically with Norix beds.

Bunkable Frame Style Bed

Bunkable bed with steel deck and steel frame. Ships K.D.
Options: Headboard, footboard, bunk-locking clamps, ladder, safety rails, floor anchor kit.

Model #TNT1611 (Twin - Fits 36" x 80" Mattress)

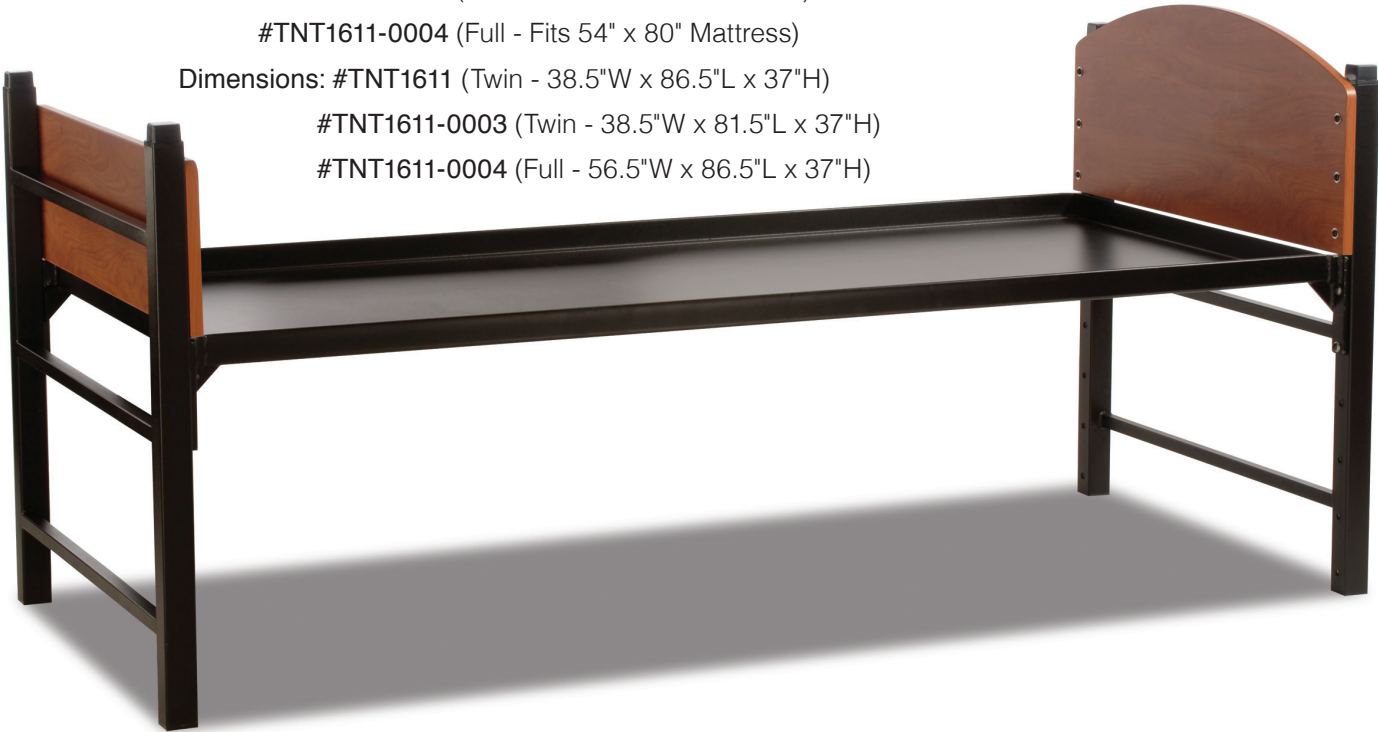
#TNT1611-0003 (Twin - Fits 36" x 75" Mattress)

#TNT1611-0004 (Full - Fits 54" x 80" Mattress)

Dimensions: #TNT1611 (Twin - 38.5"W x 86.5"L x 37"H)

#TNT1611-0003 (Twin - 38.5"W x 81.5"L x 37"H)

#TNT1611-0004 (Full - 56.5"W x 86.5"L x 37"H)



Frame Style Bunk Bed

Bunk bed with steel deck and steel frame. Ships K.D.
Options: Headboard, footboard, ladder, safety rails, floor anchor kit.

Model #TNT1651 (Fits 36" x 80" Mattress)

#TNT1651-0003 (Fits 36" x 75" Mattress)

Dimensions: #TNT1651 (38.5"W x 86.5"L x 72"H)

#TNT1651-0003 (38.5"W x 81.5"L x 72"H)



Spring Deck Bunk Bed

Bunk bed with spring deck and steel frame. Ships K.D.
Options: Headboard, footboard, ladder, safety rails, floor anchor kit.

Model #TNT1351 (Fits 36" x 80" Mattress)

#TNT1351-0003 (Fits 36" x 75" Mattress)

Dimensions: #TNT1351 (38.5"W x 85.8"L x 72"H)

#TNT1351-0003 (38.5"W x 80.8"L x 72"H)



Bunkable Spring Deck Bed

Bunkable bed with spring deck and steel frame. Ships K.D.
Options: Headboard, footboard, ladder, safety rails, floor anchor kit.

Model #TNT1311 (Fits 36" x 80" Mattress)

#TNT1311-0003 (Fits 36" x 75" Mattress)

Dimensions: #TNT1311 (38.5"W x 85.8"L x 37"H)

#TNT1311-0003 (38.5"W x 80.8"L x 37"H)



Loft Bed

Loft bed with steel deck and steel frame. Ships K.D.
Options: Headboard, footboard, safety rails, ladder, floor anchor kit.

Model #TNT1750 (Loft Bed)

#TNT1753 (Loft Bed & Spanner Desk)

#TNT1710 (Bunkable Loft Bed)

#TNT1713 (Bunkable Loft Bed & Spanner Desk)

Dimensions: 38.5"W x 86.5"L x 72"H.



Spring Deck Loft Bed

Loft bed with spring deck and steel frame. Ships K.D.
Options: Headboard, footboard, safety rails, ladder, floor anchor kit.

Model #TNT1850 (Loft Bed)

#TNT1853 (Loft Bed & Spanner Desk)

#TNT1810 (Bunkable Loft Bed)

#TNT1813 (Bunkable Loft Bed & Spanner Desk)

Dimensions: 38.5"W x 85.8"L x 72"H.



Chests and Nightstands

With standard high-pressure laminate top surface, Titan® chests and nightstands dress up the room ensemble. 18 gauge steel drawer bodies. 14 gauge drawer glides welded to the drawer body, with no screws to pull out of the sides. The glides have no moving parts, so there's nothing to break or wear out. Add optional matching laminate drawer fronts to further enhance the residential look.



Nightstand

Steel nightstand with non-removable drawers. Drawers feature padlock hasp locking mechanism. Institutional-grade laminated top.

- Model #TNT2029 (Steel 2 Drawers)
#TNT2129 (Laminate 2 Drawers)
#TNT2039 (Steel 3 Drawers)
#TNT2139 (Laminate 3 Drawers)
Dimensions: 20"W x 20"D x 25"H



* Shown with Titan Frame Style Bed. Sold separately.

Drawer Locker

Personal storage locker with steel top and one nonremovable drawer features a padlock hasp locking mechanism, non-adjustable floor glides, ganging capability and a 2" caster that supports the front of the drawer when open. Fits under Titan steel and spring deck frame style beds.

- Model #TNT7016 (Steel Drawer)
#TNT7116 (Laminate Drawer)
Dimensions: 24"W x 31.5"D x 18.25"H



Two Drawer Chest

Steel chest with steel top and two non-removable drawers. Drawers feature padlock hasp locking mechanism. Fits under #TNT 1611 and TNT1311 Bunkable Frame Style Beds.
Options: Passive locking corner attachments.

- Model #TNT7026 (Steel Drawers)
#TNT7126 (Laminate Drawers)
Dimensions: 30"W x 24"D x 18"H



Three Drawer Chest

Steel chest with institutional-grade laminated top. Three non-removable drawers. Drawers feature padlock hasp locking mechanism.
Model #TNT7039 (Steel Drawers)
#TNT7139 (Laminate Drawers)
Dimensions: 30"W x 24"D x 30"H



Five Drawer Chest

Steel chest with institutional-grade laminated top. Five non-removable drawers. Drawers feature padlock hasp locking mechanism.
Model #TNT7059 (Steel Drawers)
#TNT7159 (Laminate Drawers)
Dimensions: 30"W x 24"D x 43"H

Desks & TV Stands



Pedestal Desk

Steel desk with institutional-grade laminated top. Three non-removable drawers. Drawers feature padlock hasp locking mechanism.

- Model #TNT6032 (42" Desk with Steel Drawers)
- #TNT6132 (42" Desk with Laminate Drawers)
- #TNT6022 (48" Desk with Steel Drawers)
- #TNT6122 (48" Desk with Laminate Drawers)

Dimensions: 42"W x 24"D x 30"H
48"W x 24"D x 30"H



Desk Carrel

Carrel Options: Tack Board and Carrel Light.

- Model #TNT6042A (42" Carrel with Steel Shelf)
- #TNT6142C (42" Carrel with Laminate Shelf)
 - #TNT6048A (48" Carrel with Steel Shelf)
 - #TNT6148C (48" Carrel with Laminate Shelf)

Dimensions: 41"W x 10"D x 26"H
47"W x 10"D x 26"H



Table Desk

Steel desk with institutional-grade laminated top. Includes pencil drawer. Adjustable floor leveler glides.

- Model #TNT6011 (36"Wide Desk)
- #TNT6062 (48"Wide Desk)

Dimensions: TNT6011 (36"W x 24"D x 30"H)
TNT6062 (48"W x 24"D x 30"H)

Wardrobes for Additional Storage

The Titan® series includes single and double door wardrobes to suit your application. Wardrobe doors feature 3 1/2", 5 knuckle hinges welded to the frame – to stand up over time. J-Bar is standard – for safety and security. Add optional laminate doors for wood-grained style.

Single Wardrobe

Freestanding single door wardrobe with one fixed shelf and safety J-bar for hanging clothes. Integrated recessed finger pull. Adjustable floor leveler glides. Ships K.D. in two boxes.

Options: Laminated door front, 3-point latching system with padlock hasp, sloped top, piano hinge, towel bar, coat hook, mirror.

Model #TNT8100 (Steel Door)
#TNT8101 (Laminate Door)
Dimensions: 24"W x 24"D x 78"H



Double Wardrobe

Freestanding double-door wardrobe with fixed main shelf, safety J-bar for hanging clothes, and high-security 3-point latching system with padlock hasp. Adjustable floor leveler glides. Ships K.D. in two boxes.

Options: Laminated door fronts, shelving insert kit, sloped top, piano hinge, towel bar, coat hook, mirror.

Model #TNT8200 (36" Wide Wardrobe Steel Doors)
#TNT8201 (36" Wide Wardrobe Laminate Doors)
#TNT8500 (42" Wide Wardrobe Steel Doors)
#TNT8501 (42" Wide Wardrobe Laminate Doors)
Dimensions: TNT8200 & TNT8201 (36"W x 24"D x 78"H)
TNT8500 & TNT8501 (42"W x 24"D x 78"H)



Safety J-bar for hanging clothes.



Double wardrobe with shelving insert kit.