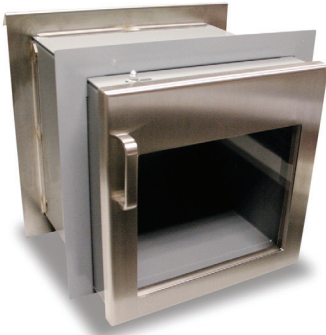


## SPECIFICATIONS

**Model**

IPP-100

**Weight**

70-92 lbs

**Dimensions**

Height 18.6"

Width 18.6"

Depth 16.3"

\*Intended for indoor use only

## DETAILS

**Options**

Level I bullet resistant polycarbonate door (Model IPP-150)

**Assembly**

Compartment shipped assembled. Flange shipped loose for field installation.

**Fabrication & Material**

Cut, notched, formed and welded 11 gauge steel frame with 11 gauge stainless steel doors and 18 gauge piano hinge. Primed painted housing. Stainless steel door.

**Installation**

Outer frame is field welded to box after installation. Wall opening size: 15 1/2" x 15 1/2".

**Warranty**

1 year limited replacement warranty

**Maintenance**

When cleaning stainless steel, Norix recommends the use of a cleaner made especially for stainless steel products.