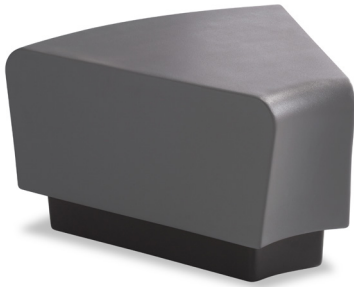


## SPECIFICATIONS

**Model**

HN835.HN850

**Weight**

53 lbs

**Dimensions**

Seat Height 18.5"

Depth 30"

Width 31.5"

\*Intended for indoor use only



## DETAILS

**Color**

Seat: Wild Berry, Pine Cone, Lagoon, Graphite, Raven

Base: Moss, Fossil, Raven

\*Due to differences in monitors, printers and materials, actual product colors may vary. Color chips are available for more accurate depiction of color.

**Options**

Ganging kit, Bolt-down kit, Factory Ballasting (50 lbs)

\*Ballastable up to 50 pounds of dry sand or gravel. On site ballast materials not supplied by Norix.

Alternative base options: Steel Base or Molded Wood Grain Legs. (See separate specification sheets)

**Assembly**

Attach ganging and bolt-down brackets according to instructions when required.

**Installation**

None required

**Fabrication & Material**

Premium TruColor™ polymer is fully compounded for superior color consistency and durability. One-piece rotationally molded, 0.250" flexible polyvinyl chloride exterior skin with softer durometer for a comfortable sit. Filled with flexible 2 part water-based polyurethane foam, fixtured with an interior 5/8" thick oriented strand board structural panel base plate, then attached with tamper resistant fasteners to a rotationally molded LLDPE (linear low density polyethylene) base. Chemically resistant to blood, vinegar, urine, feces, salt solution and chlorine solution. Anti-ligature design with no internal openings. Made in the U.S.A.

**Warranty**

10 year limited replacement warranty.

Certain apparel dyes, including indigo dyes commonly used in denim jeans, may migrate onto the surface of the material and become visible on lighter colors. This phenomenon is increased by humidity and temperature and may be irreversible. Certain inks, including ball point ink and permanent markers can create permanent stains.

**Maintenance**

For routine and regular cleaning maintenance, Norix recommends the use of Purple Power® Cleaner, a product that is readily available online and in stores that sell cleaning supplies. For the deep-scrub cleaning of tougher stains, marks and debris – including denim stains when cleaned often and soon after the dye appears – we recommend the use of World's Best Sensitive Surface Graffiti Remover. Removing stains and marks immediately or as soon as possible will produce the best results. Depending on the frequency the furniture is used, we also recommend standardized weekly surface cleanings with a soft cloth soaked in mild detergent and warm water. Finish with a wet cloth to remove dirt and dry with a soft cloth. Additionally, we recommend applying a thin layer of Black Magic Protectant every two months or after heavy stain cleaning to prevent accidental spills and stain penetration. Wipe chairs with foam sponge.

## TESTING

**Performance Test Standards**

- Product tested to 750 lb static load
- Product dynamic drop tested to a relative impact force of two times BIFMA 5.4 15.4.2 (250 lbs from 18")
- Tested to 184 lbs Puncture Resistance according to ASTM D4833-07
- Meets or exceeds the requirements of ANSI/BIFMA X5.4-205

**Flammability Test Standards:**

Compliant with the following flammability standards:

- State of California, Technical Bulletin No. 133, Flammability Test Procedure for Seating Furniture for Use in Public Occupancies
- State of California, Technical Bulletin No. 117, Flammability Test Procedure for Seating Furniture for Use in Public Occupancies
- UL1056 Fire Test of Upholstered Furniture
- ASTM E1537 Test Method for Fire Testing of Real Scale Upholstered Furniture Items
- NFPA 261 Cigarette Ignition Resistance of Upholstered Furniture

**Environmental Test Standards**

GREENGUARD and GREENGUARD Gold Certified by UL Environment. Product certified for low chemical emissions to UL 2818. UL.COM/GG.