

COMFORT SHIELD®

# DORM MATTRESSES

2 0 2 1



ENGINEERED TO ENDURE®

**NORIX**

# Comfort Shield® Dorm Mattresses

The Comfort Shield® Dorm Mattress are institutional-grade with anti-microbial nylon covers and anti-crease inverted seams. These dorm mattresses are available in two grade levels: economy Foam Core construction and a Dual Comfort Foam Encased Innerspring construction. Comfort Shield® Sewn Seam Mattresses carry a 3 year limited warranty, and comply with current flammability test standards.

Anti-crease inverted seam construction uses fire retardant Kevlar® thread for strength and durability. The anti-microbial 210 Denier Oxford Nylon Cover has a polyurethane coating and laminated flame retardant barrier. It is also moisture resistant, anti-bacterial, crack resistant and stain resistant.

## Dual Comfort Foam Encased Innerspring

- Premium 7" Foam/Innerspring construction.
- Tempered high carbon steel wire innerspring for added sleep support.
- Premium foam side rails fully encase the spring unit for sitting comfort.
- Special convoluted foam responds to body contours for comfortable weight distribution.
  - Higher density foam for greater firmness on one side.
  - Lighter density foam for softness on the other.
- Compliant with Boston Fire Department BFD IX-11 test.



Cut away view of the Dual Comfort Foam Encased Innerspring core.



Specially designed to fit 36" x 80" sleep surfaces on Norix® Attenda®, Titan™, Safehouse™ and Protégé™ beds. Ships economically with Norix® beds.

## Foam

### Sewn Seam Mattress

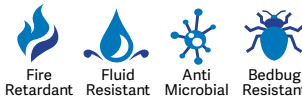


Shown with Safehouse® Captains Bed

Conventional grade foam provides balanced comfort and firmness. The 210 Denier Oxford Nylon mattress cover with laminated fire retardant barrier and polyurethane coating is moisture resistant, anti-bacterial, anti-fungal, crack resistant, stain resistant, anti-static and breathable. Anti-crevice inverted seam uses FR Kevlar® thread for strength and durability.



Navy



## Foam Encased Innerspring

### Sewn Seam Mattress

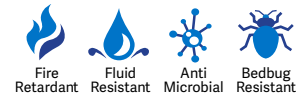


Shown with Protégé™ Bunkable Bed

1.35 pcf density convoluted foam offers plush comfort on one side while 1.5 pcf foam yields a more firm sleep surface on the other. A premium weight, polyurethane side rail surrounds the tempered high carbon steel wire innerspring unit and is protected by a spun-bonded polypropylene quilt cover. The 210 Denier Oxford Nylon mattress cover with laminated fire retardant (FR) barrier and polyurethane coating is moisture resistant, anti-bacterial, anti-fungal, crack resistant, stain resistant, anti-static and breathable. Anti-crevice inverted seam uses FR Kevlar® thread for strength and durability.



Navy

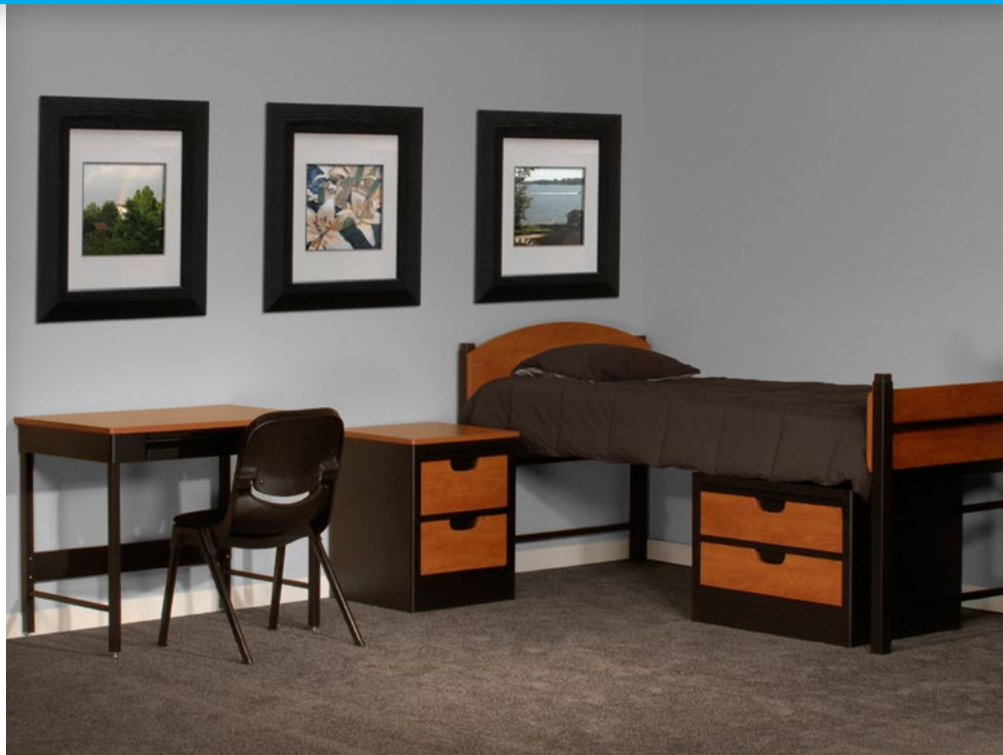


\*Due to differences in monitors, printers and materials, actual product colors may vary. Color chips are available for more accurate depiction of color.

## Infection Control

At Norix, infection control is top of mind every time we develop a new product. After all, Norix furniture is in behavioral healthcare facilities, correctional spaces, shelter environments, and other places that historically transfer sickness and disease regularly if proper protocols and equipment are not in place.

Norix products are built with durability in mind including the ability to easily clean and sanitize.



AT NORIX, WE DESIGN INNOVATIVE, ROBUST FURNITURE THAT MEETS THE REAL-WORLD NEED FOR HUMANIZING CHALLENGING ENVIRONMENTS.



Individual attributes vary by product. See specification sheet for details.



**NORIX**<sup>®</sup>

One Innovation Drive, West Chicago, Illinois 60185  
Phone: 630-231-1331 | Toll Free: 800-234-4900 | Fax: 630-231-4343  
2/21 | furniture@norix.com ©2021 Norix Group, Inc.

**NORIX.COM**